

Sensaphone 2000

User's Manual

.....

Version 3.3

Phonetics, Inc.

Every effort has been made to ensure that the information in this document is complete, accurate and up-to-date. Phonetics, Inc. assumes no responsibility for the results of errors beyond its control. Phonetics, Inc. also cannot guarantee that changes in equipment made by other manufacturers, and referred to in this manual, will not affect the applicability of the information in this manual.

Third Edition, version 3.3, September, 2000.

Written and produced by Phonetics, Inc.

Sensaphone is a registered trademark of Phonetics, Inc.

Touch Tone is a registered trademark of AT&T.

Important Safety Instructions

Your Sensaphone 2000 has been carefully designed to give you years of safe, reliable performance. As with all electrical equipment, however, there are a few basic precautions you should take to avoid hurting yourself or damaging the unit:

Read the installation and operating instructions in this manual carefully. Be sure to save it for future reference.

Read and follow all warning and instruction labels on the product itself.

To protect the Sensaphone 2000 from overheating, make sure all openings on the unit are not blocked. Do not place on or near a heat source, such as a radiator or heat register.

Do not use your Sensaphone 2000 near water, or spill liquid of any kind into it.

Be certain that your power source matches the rating listed on the AC power transformer. If you're not sure of the type of power supply to your facility, consult your dealer or local power company.

Do not allow anything to rest on the power cord. Do not locate this product where the cord will be abused by persons walking on it.

Do not overload wall outlets and extension cords, as this can result in the risk of fire or electric shock.

Never push objects of any kind into this product through ventilation holes as they may touch dangerous voltage points or short out parts that could result in a risk of fire or electric shock.

To reduce the risk of electric shock, do not disassemble this product, but return it to Phonetics' Customer Service, or another approved repair facility, when any service or repair work is required. Opening or removing covers may expose you to dangerous voltages or other risks. Incorrect reassembly can cause electric shock when the unit is subsequently used.

If anything happens that indicates that your Sensaphone 2000 is not working properly or has been damaged, unplug it immediately and follow the procedures in the manual for having it serviced. Return the unit for servicing under the following conditions:

1. The power cord or plug is frayed or damaged.
2. Liquid has been spilled into the product or it has been exposed to water.

3. The unit has been dropped, or the enclosure is damaged.
4. The unit doesn't function normally when you're following the operating instructions.

Avoid using a telephone (other than a cordless type) during an electrical storm. There may be a remote risk of electric shock from lightning.

Do not use the telephone to report a gas leak in the vicinity of the leak.

CAUTION

To reduce the risk of fire or injury to persons, read and follow these instructions:

1. Use only the following type and size batteries: Ni-Cad, size C
2. Do not dispose of the batteries in a fire. The cell may explode. Check with local codes for possible special disposal instructions.
3. Do not open or mutilate the batteries. Released electrolyte is corrosive and may cause damage to the eyes or skin. It may be toxic if swallowed.
4. Exercise care in handling batteries in order not to short the battery with conducting materials such as rings, bracelets, and keys. The battery or conductor may overheat and cause burns.
5. Do not mix old and new batteries in this product.

FCC Requirements

Part 68: The Sensaphone 2000 complies with Part 68 of the FCC rules. On the back of the unit there is a label that contains, among other information, the FCC Registration Number and the Ringer Equivalence Number (REN) for this equipment. You must, upon request, provide this information to your local telephone company.

The REN is useful to determine the quantity of devices that you

may connect to your telephone line and still have all of those devices ring when your telephone number is called. In most, but not all areas, the sum of the REN's of all devices connected to one line should not exceed five (5.0). To be certain of the number of devices that you may connect to your line, you may want to contact your local telephone company to determine the maximum REN for your calling area.

This equipment may not be used on coin service units provided by the telephone company. Connection to party lines is subject to state tariffs.

Should the Sensaphone 2000 cause harm to the telephone network, the telephone company may discontinue your service temporarily. If possible, they will notify you in advance. But if advance notice isn't practical, the telephone company may temporarily discontinue service without notice and you will be notified as soon as possible. You will be informed of your right to file a complaint with the FCC. The telephone company may make changes in its facilities, equipment, operations, or procedures where such action is reasonably required in the operation of its business and is not inconsistent with the rules and regulations of the FCC that could affect the proper functioning of your equipment. If they do, you will be notified in advance to give you an opportunity to maintain uninterrupted telephone service.

The telephone company may ask that you disconnect this equipment from the network until the problem has been corrected or until you are sure that the equipment is not malfunctioning.

Part 15: This equipment has been tested and found to comply with the limits for a Class A digital device, pursuant to Part 15 of the FCC Rules. These limits are designed to provide reasonable protection against harmful interference when the equipment is operated in a commercial environment. This equipment generates,

uses and can radiate radio frequency energy and, if not installed and used in accordance with the instructions, may cause harmful interference to radio communications. Operation of this equipment in a residential area is likely to cause harmful interference in which case the user will be required to correct the interference at his own expense.

Telephone Consumer Protection Act

The FCC Telephone Consumer Protection Act of 1991 makes it unlawful for any person to use a computer or other electronic device, including FAX machines, to send a message unless such message contains, in a margin at the top or bottom of each transmitted page or on the first page of the transmission, the date and time it is sent and an identification of the business or other entity, or other individual sending the message, and the telephone number of the sending machine or such business, other entity, or individual. (The telephone number provided may not be a 900 number or any other number for which charges exceed local or long-distance transmission charges.)

To comply with this law, you must enter the following information into your Sensaphone 2000:

Date & Time as shown in the System Programming section of this manual.

Name and telephone number to identify the source of the FAX transmission as shown in the System Programming section of this manual.

Canadian Department of Communications Statement

Notice: The Canadian Department of Communications label identifies certified equipment. This certification means that the equipment meets certain telecommunications network protective operational and safety requirements. The Department does not guarantee the equipment will operate to the user's satisfaction.

Before installing this equipment, users should ensure that it is permissible to be connected to the facilities of the local telecommunications company. The equipment must also be installed using an

acceptable method of connection. In some cases, the company's inside wiring associated with a single line individual service may be extended by means of a certified connector assembly (telephone extension cord). The customer should be aware that compliance with the above conditions may not prevent degradation of service in some situations.

Repairs to certified equipment should be made by an authorized Canadian maintenance facility designated by the supplier. Any repairs or alterations made by the user to this equipment, or equipment malfunctions, may give the telecommunications company cause to request the user to disconnect the equipment.

Users should ensure for their own protection that the electrical ground connections of the power utility, telephone lines and internal metallic water pipe system, if present, are connected together. This precaution may be particularly important in rural areas.

CAUTION: Users should not attempt to make such connections themselves, but should contact the appropriate electric inspection authority, or electrician, as appropriate.

The Ringer Equivalence Number (REN) assigned to each terminal device denotes the percentage of the total load to be connected to a telephone loop which is used by the device to prevent overloading. The termination on a loop may consist of any combination of devices subject only to the requirement that the total of the Ringer Equivalence Numbers of all the devices does not exceed 5.0. For Sensaphone 2000, the Ringer Equivalence Number is 0.3.

Contents

Important Safety Instructions	3
CAUTION	4
FCC Requirements	4
Telephone Consumer Protection Act	6
Canadian Department of Communications Statement	6
Chapter 1: Introduction	15
Programming Interface	16
Technical Support	16
About This Manual	16
Chapter 2: Installation	19
OPERATING ENVIRONMENT	19
MOUNTING THE UNIT	19
POWER SURGE PROTECTION	20
BATTERY BACKUP	20
Turning the Sensaphone 2000 on	20
TELEPHONE LINE	21
Line Seizure	22
INPUT CONFIGURATION	22
WIRING SENSORS AND TRANSDUCERS	23
LED INDICATORS	24
Inputs 1-8 and Power:	24
Battery:	24
System-On:	24
Phone:	24
Chapter 3: Communications	25
Installing and Starting the Software	25
Minimum requirements	25
Installation	25
WINDOWS '95 INSTALLATION	25
WINDOWS 3.1 INSTALLATION	26
Running the Software	26

Sensaphone 2000 Menu Bar 27

Communications Setup 28

Local Port Configuration 28

Modem Setup 28

Communication Status 29

Advanced Comm Setup 30

Options 31

Chapter 4: Programming..... 33

SETTING UP NEW UNITS 33

Procedure 34

COMMUNICATING WITH SENSAPHONE 2000 35

Local Communication 35

Modem Communication 35

Off-line Communication 36

MANAGING UNIT PROGRAMMING FILES 36

To create a Data File: 36

To view a Data File Off-line: 37

To delete a Data File: 37

To load an existing Data File into a Sensaphone 2000 Unit: 37

SYSTEM PROGRAMMING 37

System Identification 38

Unit Phone Number: 38

Unit Description: 38

Clock: 39

Unit Date & Time 39

Auto Daylight Savings 39

Dialout Settings: 39

Dialing Method 39

Dialing Prefix 39

Alpha Pager Speed 40

Maximum Calling Rounds 40

Voice Repetitions 40

ACCESS: 40

Acknowledgment Code 40

Voice Password 40

Slave ID 41

Passwords 41

Incoming Calls: 41

Rings Until Answer 41

Carrier Wait Time 41

INPUTS 41

STATUS TAB: 42

Input Name: 42

Value (with units): 42

Status: 43

State: 43

Min & Max: 43

Clear Alarms: 44

CONFIGURATION TAB: 44

Input Type: 44

Table Low & Table High: 44

Calibration: 45

Label/Units: 45

ALARM PROGRAMMING TAB: 46

Inputs Name: 46

Alarm Low Limit: 46

Alarm High Limit: 47

Recognition Time: 47

Call List: 47

Alarm Enable/Disable: 48

Alarm Reset Time: 48

MONITORS 48

Displaying Input Monitors 48

Delete Input Monitors 49

Bar Reading: 49

Low Limit: 49

High Limit: 49

Low Alarm Limit: 49

High Alarm Limit: 50

Minimum Input Reading: 50

Maximum Input Reading: 50

Gauge Reading: 50

Low Limit: 50

High Limit: 51

Low Alarm Limit: 51

High Alarm Limit: 51

Minimum Input Reading: 51

Maximum Input Reading: 51

DESTINATIONS 52

Name: 52
Destination: 53
Special Dialing Codes: 54
Special Alphanumeric Pager Dialing Codes 55
Call Zones:..... 55
Alarm Call Mode: 56
Disabled: 56
Until Acknowledged: 56
Inform: 57
DIAL TYPE: 58
Intercall Delay: 59
Send Report: 59
DATALOGGING 59
Interval: 60
Use Start Time:..... 61
Start Time:..... 61
Inputs Being Logged: 61
Start/Stop datalogging: 61
RESET NOW Button 62
DOWNLOADING THE DATA LOGGER: 62
VIEWING THE DATA LOGGER (ON-LINE): 62
VIEWING THE DATA LOGGER (OFF-LINE): 63
Input selection: 63
From Date and To Date: 63
Query: 63
Graph: 63
Export: 64
EVENT LOGGER 64
Downloading the Event Logger: 65
Viewing the Event Logger: 65
Unit selection: 66
Event types: 67
Query Times:..... 67
View: 67
Reset Event Logger:..... 67
REPORTS 67
Current Status:..... 68
Data Logger: 68
Use Start Time:..... 68
Report Interval:..... 68

POLLING 69
 GLOBAL VIEW: 72
 SETTINGS: 72
Enable Polling: 72
Reset Data Log after download: 72
Print Data Log after download 73
Print Event Log after download 73

Chapter 5: Status Report and Voice Messages .. 75

Playing/Recording Messages using the Voice Record Jack 75
Local Status Report 76
Status Report 76
Sample Status Report 77

Chapter 6: Operation 79

PART ONE: ALARM DIALOUT AND ACKNOWLEDGMENT 79
Alarm Recognition: 79
Alarm Notification: 79
Dialout Note: Call Progress 79
Alarm Call Mode: Until Acknowledged vs. Inform 80
Alarm Dialout - Voice 80
Alarm Dialout - Beeper 81
Alarm Dialout - Alphanumeric Pager 81
Alarm Dialout - Modem 81
Alarm Dialout - Fax 82
Alarm Dialout - E-mail 82
ALARM ACKNOWLEDGMENT: 82
Alarm Acknowledgment - Voice Dialout 82
Alarm Acknowledgment - Beeper Dialout 83
Alarm Acknowledgment - Alphanumeric Pager Dialout 84
Alarm Acknowledgment - Automatic (Max Calls) 85
Acknowledgement ID 86
PART TWO: REPORT DIALOUT 87
PART THREE: CALL-IN STATUS 87
Voice Mode: 87

Chapter 7: Polling Mode & Auto Answer Mode 89

Enabling Auto Answer Mode 89
Enabling Polling Mode 89

**APPENDIX A : Checking Your Sensaphone 2000
for Proper Operation 91**

APPENDIX B: System Events List..... 93

APPENDIX C: Engineering Specifications..... 95

APPENDIX D: Thermistor Tables 99

APPENDIX E: RS232 Specifications..... 101

APPENDIX F: Modbus Protocol 103

APPENDIX G: Troubleshooting 111

APPENDIX H: Accessories 117

APPENDIX I: Returning the Unit for Repair ... 119

INDEX 121

WARRANTY

Chapter 1: Introduction

Welcome to the Sensaphone 2000 by Phonetics, Inc. The 2000 is a powerful monitoring, alarm, and data logging system. It can monitor equipment and environmental conditions using 8 universal inputs, plus built-in power failure detection. The Sensaphone 2000 also features a wide variety of communication options: user recordable voice, fax, modem, numeric pager, alphanumeric pager, and internet e-mail.

The Sensaphone 2000 is a fully programmable environmental monitoring system for unattended or remote applications. The unit will monitor and alarm on (8) universal inputs including: N.O./N.C. contact, 2.8K & 10K thermistor, 4-20mA, 0-5V, run time accumulator, and pulse count. The unit will also monitor AC power and battery condition. On the front of the unit are LED indicators to show the operating status. Each input (including power) has a red status LED indicating the alarm status of the input. There is also a green LED for Battery status, a green LED for System-On status and an amber LED for Phone status.

The unit can be programmed via a local serial port or remotely by modem using an IBM compatible computer with the Windows operating system and the included Manager 2000 software package. All programming is stored in nonvolatile memory. The unit is capable of performing data logging of the (8) universal inputs, power and battery voltage. The data logging is stored in nonvolatile memory. A real-time clock is also included to time stamp logged data and to schedule reports. The unit is capable of sending automatic reports on a programmable time basis, (i.e. Send a report every x hours starting at time xx:xx). Reports may be sent via fax or e-mail only, and will be sent to all destinations programmed to receive reports. The report comprises a cover page and the unit data, which includes the current conditions of each input, power status and battery condition. If the data logger is enabled and programmed to be sent with reports, a data log report will also be sent at this time. You also have the option to retrieve the data logger information locally or remotely on demand.

The unit comes in an aluminum enclosure with tabs for wall or panel mounting. Terminal connections for inputs are easily accessible from the front of the unit. The unit is powered via a plug-in adapter and has a backup battery holder located in a separate chamber in the enclosure. The backup battery system requires (6) C-size nicad batteries. Circuitry in the unit will maintain proper charging of the battery system. The unit is capable of alarming via

voice, alphanumeric pager, numeric pager, fax or e-mail. You also have the capability to program a call list for each input as well as four time zones to assign telephone numbers to. You can even monitor the input values in real-time through the local port or on-line via modem.

Note: E-mail requires a subscription fee.

Programming Interface

Manager 2000 Windows programming software is included to allow quick and easy access all of the unit's programmable parameters. Sophisticated features such as realtime input monitoring, graphical bar and gauge displays, polling of multiple units and a database to store and query data logger information, all combine to provide a complete monitoring system. The Programming and Operation chapters provide step-by-step instructions on how to use all of the unit's features.

application chapters are included to help you speed programming and to understand Sensaphone 2000's features. You should thoroughly read this manual to establish a basic understanding of the system and keep it as a reference.

Chapter 2: Installation

This chapter provides information to install the Sensaphone 2000. Please read the entire chapter before starting.

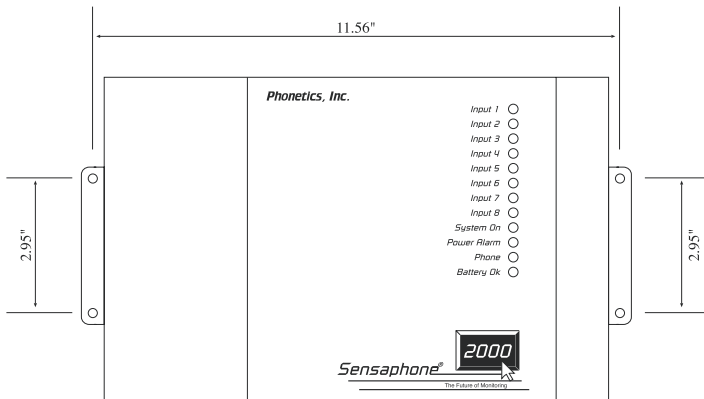
OPERATING ENVIRONMENT

The Sensaphone 2000 should be mounted and operated in a clean, dry environment. The unit is microprocessor controlled and as a result it should not be installed near devices that generate strong electromagnetic fields. Such interference is typically generated by power switching equipment such as relays or contactors. A poor operating environment may result in unwanted system resets and/or system lockup. The temperature range the unit can operate in is 32°F to 122°F (0°C to 50°C). If the unit needs to operate below freezing, a strip heater should be installed nearby.

MOUNTING THE UNIT

When you receive the unit, carefully remove it from the box. Mounting tabs with holes are provided on the left and right sides of the enclosure (see figure below). Mount the unit in a position that allows easy access to the input terminal block, battery compartment, on/off switch and the programming port. Also, there must be a power outlet and telephone jack close to the unit.

CAUTION: The Sensaphone 2000 is a sensitive electronic device. Personnel and work area should be grounded before coming into contact with this device. Do not install the Sensaphone 2000 near strong electrostatic, electromagnetic, magnetic or radioactive fields.



mounting dimensions

POWER SURGE PROTECTION

The Sensaphone 2000 can be damaged by power surges and lightning through the telephone line and the power supply. Although the unit has built-in surge protection, we strongly recommend that additional protection be obtained for the unit and for any electronic equipment that is attached to your power supply and telephone lines. Power surge protection is especially important if you live in a lightning-prone area.

BATTERY BACKUP

The Sensaphone 2000 has a compartment for 6 “C” cell Nickel-Cadmium rechargeable batteries (not included). Be sure to use quality batteries that are rated for at least 2200mAh. These will provide approximately 10-15 hours of unit operation in the event of a power failure.

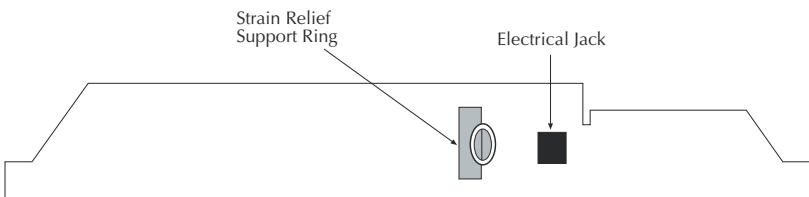
NOTE: Use ONLY Nickel-Cadmium rechargeable batteries.

The unit will constantly recharge the batteries whenever the power switch is turned on and the unit is plugged into a power supply.

Also, a 3V lithium battery is included for memory storage, to retain user programming. This battery should provide at least 2 years of service without power, and up to 10 years of intermittent use.

Turning the Sensaphone 2000 on

Thread the power supply cord through the strain relief ring next to the power jack, and plug it in. Then plug the transformer into a 115VAC 60Hz outlet. The ring anchors the cord, protecting the plug and jack. Slide the power switch to ON to start the unit. The System-On LED should glow steadily.

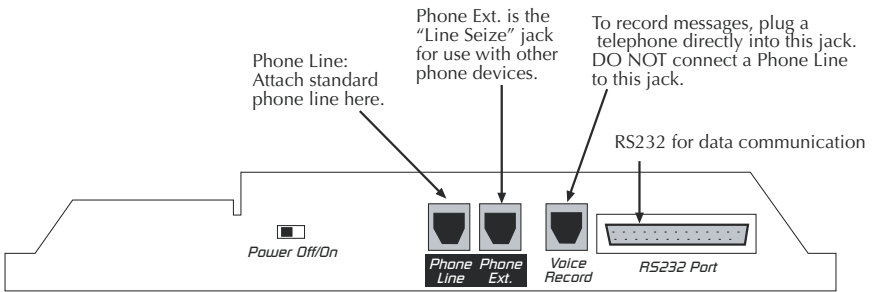


Sensaphone 2000 Rear View

It is important to note that when the unit is turned off, all programming is retained in non-volatile memory via the internal 3V lithium battery. The “C” cell Ni-Cad batteries are not in use when the power switch is off.

TELEPHONE LINE

Connect the Sensaphone 2000’s PHONE LINE jack to a standard 2 wire analog phone line. The unit dials using pulse or tone, with loop start only. The Sensaphone 2000 will recognize ringer frequencies from 16 to 60 Hz and will operate with all standard analog telephone systems that accept pulse or tone dialing.



Sensaphone 2000—Front View

CAUTION: Do NOT connect the unit’s VOICE RECORD jack to a live telephone line as this will cause permanent damage to the unit.

Certain private telephone systems and public switching equipment may not accept the unit’s dialing or may generate an unacceptable ring signal. In those cases, a dedicated line may be required for the unit. Consult the supplier of your telephone system if you encounter problems.

CAUTION: Never install telephone wiring during a lightning storm. Never install telephone jacks in wet locations unless the jack is specifically designed for wet locations. Never touch uninsulated telephone wires or terminals unless the telephone line has been disconnected at the network interface. Use caution when installing or modifying telephone lines.

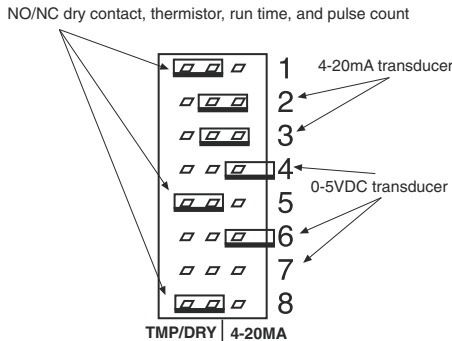
Line Seizure

Line seizure gives the 2000 unit the ability to “seize” the telephone line when it needs to dial out. For example, if an emergency occurs which puts the 2000 in alarm mode, the unit will be able to dial out even if a telephone has been left off the hook. To the right of the PHONE LINE jack is another labeled PHONE EXT. This jack can be used to share a phone line with other devices (telephone, fax machine, modem) and to give the 2000 priority in the event of an emergency. To make use of this feature you must have all the extension devices originate from the PHONE EXT. jack. Whenever the unit must make an alarm phone call, the unit will disconnect any current phone calls and seize the line for its own use. The unit will continue to seize the line until the alarm has been acknowledged.

INPUT CONFIGURATION

The Sensaphone 2000 can accept analog and digital inputs over the range 0-5VDC. It can also accept current from 4-20mA transducers. The input load for current transducers is 220 Ohms.

To set the input configuration, adjust the jumpers located just below the terminal block. Needle-nose pliers are recommended for moving shunts. There is one for each input so that each input can be individually configured. For thermistors, N.O./N.C. (normally open/normally closed) dry contacts, run time and pulse count, set the jumper to the left (marked TMP/DRY). For current transducers set the jumper to the right (marked 4-20mA). For 0-5VDC transducers, remove the jumper or simply hang it off one pin for storage purposes. See the figure below.



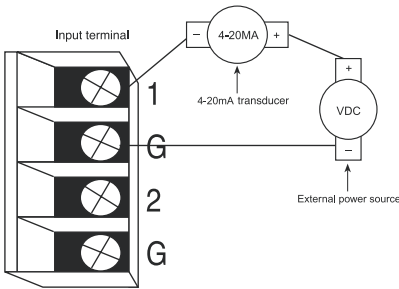
WIRING SENSORS AND TRANSDUCERS

Thermistors: The unit will accept 2.8K and 10K thermistors. These should be wired to an input terminal and the adjacent ground terminal. For compatible thermistors check the thermistor data in the appendices. 2.8K Thermistor temperature range: -58°F to 176°F (-50°C to 80°C); 10K Thermistor temperature range: -60°F to 300°F (-50°C to 150°C).

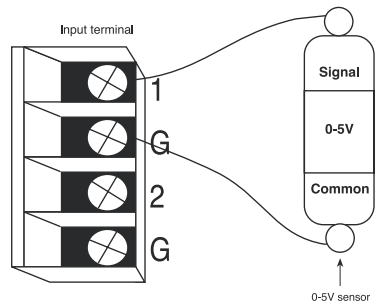
Dry Contacts: Only contacts which have no voltage or current applied may be used. Connect the contact to an input terminal and an adjacent ground terminal. Do NOT try to monitor a contact that switches 120VAC. This will permanently damage the unit.

4-20mA: A 4-20mA transducer requires you to have an external DC power supply for the transducer. Make sure the input is configured for 4-20mA.

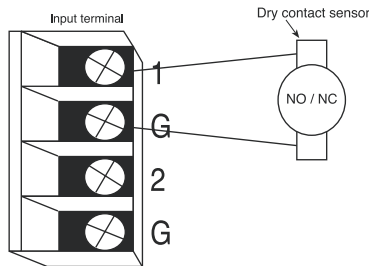
Connect the positive wire of your transducer to the positive terminal of your DC power supply. Connect the negative terminal of the transducer to an input terminal on the Sensaphone 2000. Connect the negative terminal from your power supply to the adjacent ground terminal on the 2000.



4-20mA Transducer



0-5V sensor



Dry Contact

The different sensor types connected to the terminal block.

LED INDICATORS

The LEDs provide on-site alarm and status information. Listed below are descriptions of how the LEDs work.

Inputs 1-8 and Power:

LED Off: Input OK

LED Blinking: Unacknowledged alarm exists

LED On: Acknowledged alarm exists

Battery:

LED On: Battery condition OK

LED Blinking: Battery condition low

LED Off: Battery very low

System-On:

LED On: System power on

LED Off : System power off

Phone:

LED On: Unit is communicating on the phone line

LED Off: Unit is not using the phone line

Chapter 3: Communications

This section describes how to install and configure the Sensaphone 2000 Windows Software for your computer and modem.

Installing and Starting the Software

Minimum requirements

486 or better computer (Pentium recommended)

4 MB of free disk space

4 MB RAM (8 MB RAM recommended)

Graphics card compatible with Microsoft Windows 3.1, 95 or NT (such as VGA)

Microsoft Windows 3.1, 95 or NT

VGA or Super VGA monitor

Mouse

Modem

INSTALLATION

The Manager 2000 Windows software setup program makes installation quick and easy. You'll be prompted to insert the installation disks in the order they are numbered. Make sure that all Windows applications are closed before attempting to run Setup. If you encounter problems during installation, please call Phonetics Technical Support at (610)558-2700.

The Sensaphone 2000 Software for Windows will install to a directory named C:\S2000, unless you choose to change the directory name.

WINDOWS '95 INSTALLATION

1. Start Windows.
2. Insert disk labelled Sensaphone 2000.
3. Select Start>Run and type in a:\Setup.exe. Click OK.
4. Follow the prompts until the installation is finished.

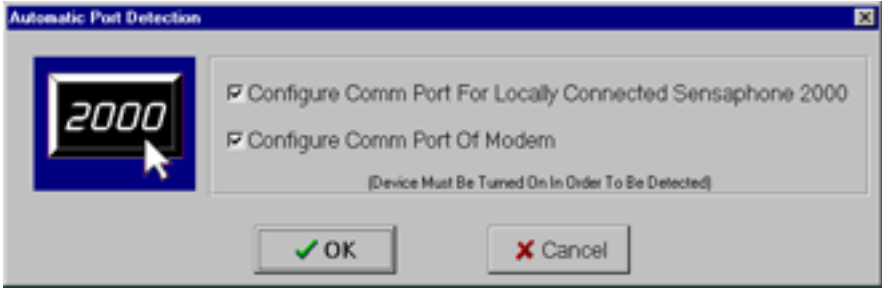
5. Insert disk 1 of the Sensaphone 2000 Database.
6. Select Start>Run and type a:\Setup.exe and click OK. This will install the Borland Database Engine.
7. Follow the prompts and install disk 2 when instructed.
8. Follow the prompts until installation is complete.

WINDOWS 3.1 INSTALLATION

1. Start Windows.
2. Insert disk 1 labelled Sensaphone 2000.
3. Select File>Run and type in a:\Setup.exe. Click OK.
4. Follow the prompts until the installation is finished.
5. Insert disk 1 of the Sensaphone 2000 Database.
6. Select File>Run and type a:\Setup.exe and click OK. This will install the Borland Database Engine.
7. Follow the prompts and install disk 2 when instructed.
8. Follow the prompts until the installation is complete.

Running the Software

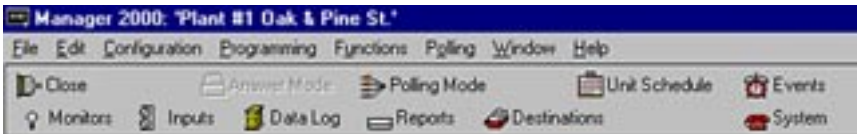
To run the software, double click the 2000 icon. When the software runs for the first time a configuration screen will appear. This will automatically configure your modem settings and local serial port if selected. If you have an external modem, make sure it is ON before you proceed. If you would prefer to configure the software manually, you may do so after installation. When you start the software you'll see the main menu and toolbar. These menus and tools will allow you to open new 2000 units, communicate with existing 2000 units, observe real-time input values and numerous other features. Pictured below is the Automatic Port Detection form.



automatic port detection screen

Sensaphone 2000 Menu Bar

The menu bar at the top of the window lists menu commands for selecting a unit, configuring your communication ports, sending and receiving programming, enabling automatic features and other functions. You can choose these commands by clicking them with the mouse. Many frequently used commands are also available as tools on the Toolbar.



The following table briefly describes each menu. Shortcut keys that you can use to display each menu are included in parentheses next to the menu names.

Menu name	Functions under this menu...
<u>F</u> ile (Alt, F)	Adding new units, opening units, closing units, loading data, saving data, deleting data, printing information, exiting.
<u>C</u> onfig (Alt, C)	Communications Setup, Communications Status, Advanced Comm Setup, Options
<u>P</u> rogram (Alt, P)	Inputs, Destinations, System, Reporting
<u>F</u> unctions (Alt, U)	Data Logging, Auto Answer, View Events, Diagnostics

<u>P</u> olling (Alt, O)	Unit Schedule, Enable
<u>W</u> indow (Alt, W)	Cascade, Tile, Arrange Icons, Minimize all
<u>H</u> elp (Alt, H)	About, Help

Communications Setup

The software will communicate to your 2000 through your computer's local serial port or through your modem. These communication paths must be properly configured for a connection to be established. (If you ran the auto-configure option at start-up, you may skip over this section.) To configure the communications settings manually, click on Configuration>Communications Setup.

Local Port Configuration

Select the appropriate serial port to communicate with the 2000. This must be a serial port on your computer that is unused and can be connected to the Sensaphone 2000's RS232 port.

Modem Setup

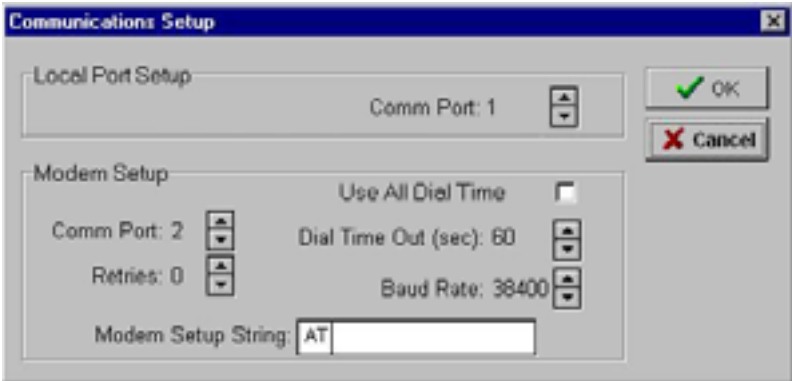
Select the serial port that communicates with your modem and select the maximum baud rate of your modem. This will typically be all that is required to configure your modem; however, additional options have been included and are described below.

Retries: This is the number of times Manager 2000 will attempt to call a Sensaphone 2000 if it encounters a busy signal or is unsuccessful at making a connection during any manual attempt to call out.

Use All Dial Time: Checking this box will make the Manager 2000 software wait until this time period has expired before attempting to communicate with the unit, even though a connection may have been established earlier.

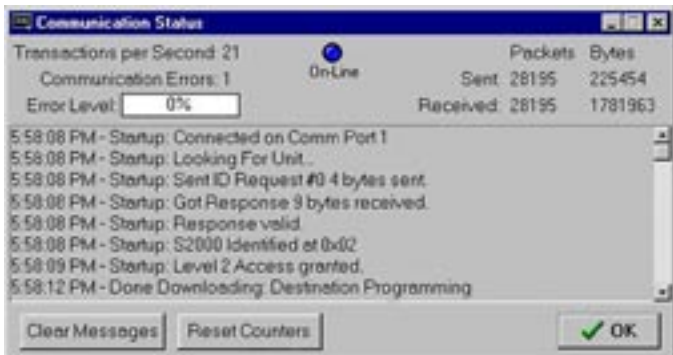
Dial Time Out: If a modem connection is not established with a Sensaphone 2000 before this time expires, Manager 2000 software terminates the call.

Modem Setup String: Manager 2000 allows you to enter a setup string using the AT command set. These are usually only needed if you are having trouble getting your modem to connect to a Sensa-phone 2000 unit. See your modem Operator's Manual for a list of AT commands supported by your modem. Note that Manager 2000 software will send the "AT" part of the command automatically.



Communication Status

The Communication Status screen provides information regarding communication performance, communication errors and text descriptions of communication activity in real time. The screen is useful for troubleshooting communication problems. The parameters for error thresholds and packet timing are adjustable in the Advanced Comm Setup menu.



Advanced Comm Setup

The Advanced Comm Setup form can be used to tune and customize the communication performance of Manager 2000. Typically you will not need to change these parameters for any reason.

Listed below is a description of each of the parameters on the form:

Status Level: This parameter determines which messages will appear in the display on the Communication Status form. There are eight levels of messages:

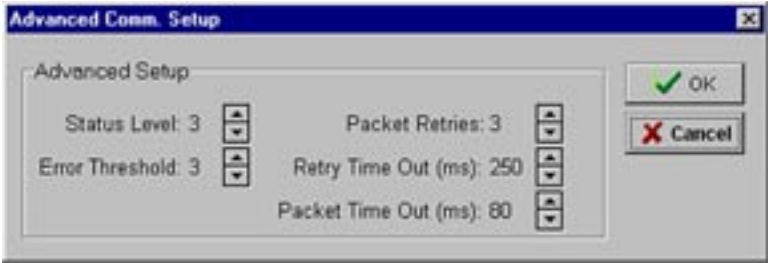
- Level 0: Messaging disabled
- Level 1: Adds significant events and errors
- Level 2: Adds modem events, writes to unit & file messages
- Level 3: Adds packet errors, advanced modem messages, download messages
- Level 4: Adds notification of read from unit
- Level 5: Adds packet data
- Level 6: Adds notification of input status polling
- Level 7: Adds polling packet data

Packet Retries: Information flows back and forth between Sensaphone 2000 and your PC in data “packets.” Both automatically check for packet transmission errors. When a bad packet is detected, it gets sent again. Packet Retries determines how many times a packet is sent before a communication error is logged.

Error Threshold: Determines how many consecutive errors will result in a disconnect.

Retry Time Out: This is the amount of time Manager 2000 will wait for a response from a Sensaphone 2000 unit before it decides to make another request.

Packet Time Out: The amount of time before the PC gives up and determines that an individual modbus request has timed out. Decreasing this parameter will not increase performance, but increasing the parameter may remove occasional errors.



advanced comm setup

Options

The Options form (under the Configuration menu) allows you to customize the display to your taste. You can have the Toolbar and/or the Statusbar be displayed or hidden. You can elect to see the commands as icons with text or as icons only. The Statusbar can be placed at the far right end of the Toolbar *only* if you choose “Buttons have Icons Only” in the Tool Bar box. Otherwise it appears on the bottom right of your screen. (See figure on the following page.)

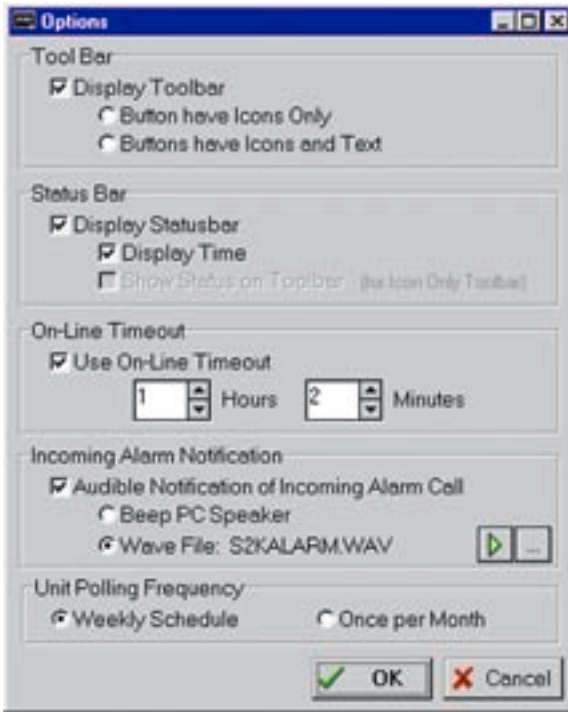


statusbar (at far right of Toolbar)

The On-Line Timeout, if selected, will automatically disconnect you from the Sensaphone 2000 when there is no mouse movement for the duration of time you specify. The range is 1 minute to 24 hours and the default, when you turn on this feature, is 1 hour.

Incoming Alarm Notification allows you to switch off and on the audible notification of an incoming alarm. The default setting is *off*. The Sensaphone 2000 comes with a pre-programmed WAV file as

its default alarm message. However, you can change that to a system beep by selecting the radio button for “Beep PC Speaker,” or select a different WAV file for your alarm message. Clicking the “Play” button at the right on this section of the Options screen will play the default message or whichever alternate you select. The “...” button beside it allows you to locate and select an alternate WAV file on your computer to replace the default message.



options screen

Chapter 4: Programming

The Sensaphone 2000 software provides access to all of the unit's programming through point-and-click menus. The unit can be programmed either locally through the serial port or remotely via modem. When you are finished programming, the Sensaphone 2000 Windows software provides the option to save the unit's programming on your computer for backup purposes. You must save this programming information in order to view the programming off-line for any unit. Once you save the programming for a particular unit, you may copy the same information into another unit if desired. A default programming file (defaults.s2k) is included in case you want to restore the unit to factory default settings.

SETTING UP NEW UNITS

When a new unit is added you will be prompted to fill in a Unit Data form. This form holds the unit's description and phone number as well as password information. Sensaphone 2000 features two-level password access: one for programming and one for status. Status-only access allows you to view input values and programming but does not allow you to change any parameters. This is useful if you want to allow multiple users to view the information for this unit but do not want them to be able to change anything. If this is the first time the unit is being accessed you should set up both passwords. When other users add this unit to their computer you can give them the status password and/or the programming password depending on your requirements. When logging in using the status password the software will automatically send the password during the initial connect sequence. When logging in using the program password you will be prompted to enter the password after connecting. You may also allow the software to automatically log in with the programming password by clicking the *"Save program password to disk"* box.

Note that if you do not enter a programming password, a default password of "S2000" will be entered for you.

Unit Data

2000

Enter the information for this Sensaphone® 2000

Unit Description:

Phone Number:

Unit Information

Last Logged In: **Never**

Location of Database: C:\S2000\db13

Data File

File Name:

Password Information

Login with status password

Status Password: (required)

Re-Enter: (required)

Login with programming password


Save program password to disk

Program Password: (optional)

Re-Enter: (optional)

New Unit Data Form

Procedure

1. Click the *Open* button on the Toolbar,  then click the “New” button on the “Open Connection” form. Or, from the menu bar choose File, then New Unit.
2. Fill in the Unit Description and Phone Number. This sets up a record that the software will reference whenever you want to communicate with or check information about this unit.
3. Enter a status password. If this the first time the unit is being set up, you must also enter a programming password or you will not be able to program the unit.
4. Select the type of password access you wish to log in with: status or programming.
 - * The status password allows viewing access only. No programming changes will be possible. The status password is automatically saved to your hard disk and will be entered for you when you attempt to communicate with the unit.
 - * The programming password allows full access to all parameters. By clicking the “Save program password to disk” box, the software will automatically enter the programming password for you when you attempt to communicate with the unit.
5. Click “OK” to add the new unit to your computer’s database.

COMMUNICATING WITH SENSAPHONE 2000

This section describes the procedure for communicating with a Sensaphone 2000 unit.

Note: the 2000 can only communicate with one person at a time. This means that if someone is logged on through the RS232 port, the unit will NOT answer a call, nor will it make any calls until the connection is closed. Conversely, if someone is on-line using the modem, you cannot log on through the RS232 port.

Choose Local or Modem communication.



Local Communication

For Local communication you must connect one of your computer's serial COM ports to the 2000's RS232 port.

1. Click the "Open" button on the Toolbar. The "Open Connection" form will appear.
2. Choose the unit you want to connect with from the text box.
3. Select "Local" Connection Mode.
4. Click "Connect."

Your PC will connect locally to the Sensaphone 2000 unit. If a local connection is not established, see the Troubleshooting section of this manual.

Modem Communication

For Remote communication you must have a modem and a telephone line connected to your computer.

1. Click the "Open" button on the Toolbar. The "Open Connection" form will appear.
2. Choose the unit you want to connect with from the text box.
3. Select "Modem" Connection Mode.
4. Click "Connect."

Your PC will instruct the modem to dial the Sensaphone 2000 unit using the phone number from the Unit Data form. The Sensaphone 2000 will answer the call and establish a connection with your modem. If a remote connection is not established, see the Troubleshooting section of this manual.

Off-line Communication

Off-line communication provides a method of viewing the programming in a unit without being connected. You can also query, view or print information from the Data Logger or Event Logger while off-line. For Off-line communication you must have a data file saved for the unit selected. This can only be created after you have finished programming a unit while on-line and saved the programming. The Manager 2000 software will prompt you to save when you exit, or you can save by clicking File>Save Data from the menu bar. A "File Save" box will appear so that you can enter a file name for that unit. Do not change the .s2k extension because the software uses this to identify Sensaphone 2000 data files.

MANAGING UNIT PROGRAMMING FILES

The programming parameters of a Sensaphone 2000 unit should be saved to a Data File in your computer. There are several reasons for this:

1. In order to view a unit's programming off-line, you need to save the unit's programming in a Data File.
2. Once you save the programming for a particular unit, you may copy the same information into another unit.
3. It's a good idea to have a backup copy of a unit's programming in case the unit gets damaged.

The Manager 2000 Windows software allows you to view saved Sensaphone 2000 unit information without being connected to a unit. You may view a unit's programming, or view a unit's downloaded Data Logger or Event Logger. In order to view a unit's programming, you need to save the unit's programming in a Data File while still on-line.

To create a Data File:

While you are on-line, choose "File" from the main menu, then select "Save Data." Enter a file name, then click "OK."

This will create an Offline Data File.

To view a Data File Off-line:

1. Click the “Open” button on the Toolbar. The “Open Connection” form will appear.
2. Choose a unit from the text box.
3. Click Edit on the “Open Connection” form. The name of the last Off-Line Data File that was created or saved appears in the lower left corner of the Unit Data form. Click “OK” to accept the file or click the Browse button next to the filename to select another file.
4. Under Connection Mode, select “Off-line.”
5. Click “Connect.”

The Manager 2000 software will display the programming parameters as if you were connected with a unit. You can view these parameters, but you can’t change them.

To delete a Data File:


Choose “File” from the main menu, then select “Delete Data File.” Select the file you wish to delete and click “OK.”

To load an existing Data File into a Sensaphone 2000 Unit:

1. Establish an on-line connection with a Sensaphone 2000 (either Local or via Modem).
2. Choose “File” from the main menu, then select “Load Data.”
3. Select the Data File you wish to load, then click “OK.”

The selected Data File will be loaded into the Sensaphone 2000. All existing programming in the unit will be overwritten.

SYSTEM PROGRAMMING

The System form includes the global system parameters that apply to the unit in general. You must be on-line with the unit to program the System parameters. Once you are on-line, choose Program from the main menu, then select System. You can also access the System programming from the Toolbar button labeled *System*. 

Below is a list of the parameters, their default settings and the range of programming for each parameter.

System Settings for "Plant #1 Oak & Pine St."

System Identification
Unit's Phone #: 555-1212
Unit Description: Plant #1 Oak & Pine

Clock
Date: 11/01/1999 Time: 01:57:23PM
Auto daylight savings:

Dialout Settings
Dialing method: Tone Alpha pager speed: 1200 Voice Reps: 3
Dialing prefix: Max calling rounds: 100

Access
Acknowledgment code: 555
Voice Password:
Slave ID: 66

Incoming Calls
Rings until answer: 1
Carrier wait time: 45 Sec

System Settings form

System Identification

Unit Phone Number:

The Unit's Phone Number is the identification number of the Sensaphone 2000 and can be up to 16 digits long. This is automatically filled in from the information you provided when setting up the unit on your computer. This number *must* be programmed to be the same as the telephone number where the unit is installed. The Unit's Phone Number serves several purposes:

1. When using your PC and Manager 2000 software to remotely program a Sensaphone 2000, this is the number your modem will dial to contact the unit.
2. It's the first thing spoken by Sensaphone 2000 during any voice call: "Hello, this is (Unit Phone Number)."
3. When Sensaphone 2000 sends a cover page with a Fax transmission or alerts an alphanumeric pager, the Unit's Phone Number is sent as part of the information.

Unit Description:

The Unit Description is the text description of the Sensaphone 2000. It can be up to 32 characters long. This is automatically

filled in from the information you provided when setting up the unit on your computer. When Sensaphone 2000 sends a cover page with a Fax transmission or alerts an alphanumeric pager, the Unit Description is sent as part of the basic information.

Clock:

Unit Date & Time

The date and time are automatically programmed into a new unit, based on your computer's date and time. This will occur the very first time you go on-line. If you are in a different time zone you will need to correct the time accordingly.

Auto Daylight Savings

This instructs Sensaphone 2000 to automatically correct the time twice a year for daylight savings.

Programmable settings: On, Off

Default setting: On

Dialout Settings:

Dialing Method

The Dialing Method parameter lets you program whether Sensaphone 2000 will dial out in Pulse or Tone. The default setting is Tone.

Dialing Prefix

The "Dialing prefix" box on the System Settings screen is for email prefixes *only*. If for instance the 2000 is on an office phone system where it had to dial a "9" to get an outside line, entering a "9" here will force the 2000 to dial "9" before dialing the email server phone number.

To enter a specific prefix for dialout types other than email, go instead to the Dialout Destination screen (see "Destinations" section later in this chapter) and enter the prefix with the phone number in the Destination column, following the instructions under "Special Dialing Codes." You must enter each prefix manually for each individual phone number that requires one.

Alpha Pager Speed

This is the baud rate of the data connection between Sensaphone 2000 and your alphanumeric pager service.

Programmable settings: 300, 1200, 2400

Default setting: 1200

Maximum Calling Rounds

The maximum number of times Sensaphone 2000 will dial through a list of destinations to attempt to deliver either an alarm or a report.

Programmable range: 0 - 100 calling rounds

Default setting: 100 calling rounds

Voice Repetitions

The number of times Sensaphone 2000 repeats the alarm message during a dial out alarm call.

Programmable range: 0-10

Default setting: 3

Access:

Acknowledgment Code

This is the code used to acknowledge an alarm via Touch-Tone telephone.

Programmable range: 0 - 999999 from 1 to 6 digits long. Note: When using an acknowledgment code with leading zeros, all digits must be included. If the acknowledgment code is 000888, simply entering "888" will NOT acknowledge the alarm.

Default setting: 555

Voice Password

Sensaphone 2000 allows you to record input and ID voice messages. These messages are protected by the voice password. The voice password must be entered on a Touch-Tone phone keypad in order to record voice messages.

Programmable range: 0 - 999999 from 1 to 6 digits long.

Default setting: 555

Slave ID

This is the modbus address of the Sensaphone 2000 unit. It is set by default and should not be changed unless you are using multiple units that might have the same, and therefore conflicting, ID numbers. The Slave ID can be set to any number between 1 and 247. It should never be set to “0,” as this will keep you from communicating with the unit.

Passwords

This command allows you to change Sensaphone 2000’s programming and status passwords. You can only change these if you are on-line and have logged on using the programming password.

Incoming Calls:

Rings Until Answer

This is the number of times Sensaphone 2000 will let the phone ring before it answers an incoming call.

Programmable range: 1 - 15 rings

Default setting: 1 ring

Carrier Wait Time

The Carrier Wait Time is the amount of time Sensaphone 2000 will wait for a modem connection when it receives an incoming call.

NOTE: Do not set this parameter too short, otherwise a modem connection may never be established.

Programmable range: 10 to 60 seconds

Default setting: 35 seconds

INPUTS

The Sensaphone 2000 monitors 8 universal inputs, power, and battery condition. You must be on-line with the unit to program the Input parameters. Once you are on-line, choose “Program” from the main menu, then select “Inputs.” You can also access Input programming from the Toolbar button labeled *Inputs*.



There are 3 tabs on the Inputs form: Status, Alarm Programming, and Configuration.

Status tab:

The Status tab shows the name, value, units of measure, status, alarm state, and Min/Max values for all of the inputs.

Inputs	Value	Status	State	Min	Max	
#1 Room Temp	-58.7 deg F	Low	Cleared	-58.7	-58.0	Clear
#2 Pressure	702.5 psi	High	Cleared	0.0	702.5	Clear
#3 Tank Level	1500.0 inches	High	Cleared	0.0	1500.0	Clear
#4 Generator	0 minutes	Stopped	No Alarm		0	Reset
#5 Input 5	Open		No Alarm			
#6 Input 6	Open		No Alarm			
#7 Input 7	Open		No Alarm			
#8 Input 8	Open		No Alarm			
AC Power	On		No Alarm			
Battery	0.0 Volts	Very Low		0.0	0.0	Clear

Clear Alarms OK

Listed below is a description of the information found on the Status tab of the Inputs form:

Input Name:

This field will allow you to type in a 16 character description for each input.

Value (with units):

This is the real time state or value of each input. If a unit of measure has been selected for the input, it will also be displayed here. If you choose Pulse Count or Run Time as your Input Types and double click on their respective Values, you will pop up a small screen on which to preset the values for each.

Display range for 0-5V, 4-20mA, and Temperature input types: -99,999.9 to 99,999.9

Display range for Pulse Count and Run Time: 0 to 999,999. You can

choose hours, minutes, or seconds for time measurement, under the Configuration tab. When the limit of 999,999 is reached, the value will return to zero.

Status:

This is the current status of each input with respect to that input's alarm programming. For any input that displays a numeric value, (temperature, 4-20mA, 0-5VDC, pulse count, or time accumulator) the Status column will display either Okay, High, or Low. For N.O./N.C. inputs, the Status Column will display either Open, Closed, or the label selected for that input from the Configuration tab.

State:

The actual alarm state of the input. There are 5 possible alarm states: No Alarm, Waiting, Alarm, Outstanding, and Cleared.

Definitions:

No Alarm (green) - A digital input is in its normal position or an analog input is within the programmed alarm limits.

Waiting (yellow) - A digital input is in the alarm position or an analog input has gone outside of the programmed alarm limits but the input's alarm recognition time has not expired.

Alarm, Alarm High, Alarm Low (red) - A digital input has remained in the alarm position or an analog input has remained outside of the programmed alarm limits for the length of the alarm recognition time. An unacknowledged alarm exists.

Cleared (purple) - An alarm has been acknowledged, but the input is still in the alarm position or is still outside of the programmed alarm limits.

Outstanding (pink) - An unacknowledged alarm exists but the input has returned to its normal position or back to within the programmed alarm limits.

Min & Max:

The highest and lowest values an input has reached. Digital inputs have no Min or Max values, while other inputs may have only a Max.

Clear Alarms:

The button marked “Clear Alarms” will, when pressed, clear *all* set alarms.

Note: To clear an *individual* alarm, double click on it in the “State” column.

Configuration tab:

The Configuration tab shows the name, type, high and low table values, calibration setting, and label/units for all of the inputs.

Inputs		Input Type	Table Low	Table High	Cal	Label/Units
#1	Room Temp	2.8k F.	0.0	125.0	-0.7	deg F
#2	Pressure	4-20mA	0.0	600.0	0.0	psi
#3	Tank Level	0-5 Volt	0.0	1500.0	0.0	inches
#4	Generator	Run Time				minutes
#5	Input 5	N.O.				none
#6	Input 6	N.O.				none
#7	Input 7	N.O.				none
#8	Input 8	N.O.				none
AC Power						
Battery						

Listed below is a description of the information found on the Configuration tab of the Inputs form:

Input Type:

This can be one of eight types - Normally Open (N.O.), Normally Closed (N.C.), 0-5V, 4-20mA, 2.8K thermistor, 10K thermistor, Pulse count or Time Accumulator.

Table Low & Table High:

An important feature that Sensaphone 2000 offers is the ability to create a unique linear table for each 4-20mA or 0-5V analog input. The Table Low & Table High fields are used to define the upper and lower analog display limits for 4-20mA and 0-5V input types. For example, suppose you're using a 4-20mA transducer to measure the depth of water in a 75 foot well. Simply enter a Table Low of 0, and

a Table High of 75 and the Sensaphone 2000 will scale the input to read between 0 and 75.0. The Table Low & Table High fields are also used to set the upper and lower limits for the bar and gauge monitors found on the Monitor form.

Programmable ranges:

Table Low: -99,999.9 to 99,999.9

Table High: -99,999.9 to 99,999.9

Default settings:

Table Low value: 0

Table High value: 100

Calibration:

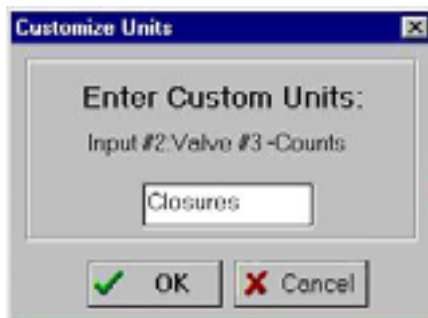
To compensate for minor variances in sensor accuracy, an offset may be programmed for each input. For example, if input #3 is sensing temperature and is reading 2.5 degrees too high, then the calibration for input #3 should be set at -2.5 to obtain an accurate reading. Digital inputs (N.O. and N.C.) cannot be calibrated.

Programmable range: +/-999.9 units

Default setting: 0.0

Label/Units:

This field lets you identify the input value using specific units of measure and/or a description of the input condition. Several selections for dry contacts are listed with an O: or C: next to them to differentiate the “Open” contact label from the “Closed” contact label. The label/unit that is selected will also be spoken during a voice telephone call (except for “Custom”). You may choose from any of the selections provided or pick “Custom” to create your own label (except for RunTime and N.O/N.C.). Select “Custom” and a “Customize Units” box like the one below will pop up.



Note that for N.O. and N.C. input types, units of NONE will result in the unit speaking “open” or “closed” during a status report.

Selectable units of measure: none, degrees F, degrees C, inches, feet, gallons, liters, psi, gpm, volts, amps, hours, minutes, seconds

Default setting: none

Alarm Programming tab

The Alarm Programming tab shows the name, high and low alarm limits, alarm recognition time, call list, dialout enable status, and alarm reset time for all of the inputs.



Listed below is a description of each of the programming options found on the Alarm Programming tab of the Inputs form:

Inputs Name:

This field will allow you to type in a 16 character description for each input.

Alarm Low Limit:

This is the value which will cause the unit to make alarm dialouts on an input low condition.

0-5V, 4-20mA, and Temperature:

Programmable range: -99,999.9 to 99,999.9

Default setting: 0

Pulse Count and Run Time Accumulator:

N/A

Alarm High Limit:

This is the value which will cause the unit to make alarm dialouts on an input high condition.

0-5V, 4-20mA, and Temperature:

Programmable range: -99,999.9 to 99,999.9

Default setting: 100

Pulse Count and Run Time Accumulator:

Programmable range: 0 to 999,999

Default setting: 1,000

NOTE: Regarding thermistors, the actual programmable range will depend upon the type of thermistor, as follows: 2.8K thermistor temperature range, from -58°F to 176°F (-50°C to 80°C); 10K thermistor temperature range, from -60°F to 300°F (-50°C to 150°C).

Recognition Time:

This is the time required for an out of tolerance condition to become an alarm. The input must remain above or below the alarm limit continuously for the entire time in order to become an alarm.

0-5V, 4-20mA, and Temperature:

Programmable range: 0 seconds - 270 minutes, Default setting: Inputs 1-8: 3 seconds

AC Power:

Programmable range: 0 seconds - 270 minutes, Default setting: 5 minutes

Pulse Count and Run Time Accumulator:

N/A

Call List:

Click this button to display the list of destinations the unit will call to deliver an alarm message for each input. Sensaphone 2000 will call the destinations in numerical order. Place a check next to each destination you want Sensaphone 2000 to call for an alarm on the currently selected input.

Default setting: All

Alarm Enable/Disable

This will enable or disable the dialout for this input.

Default setting: Enabled


Alarm Reset Time:

This is the time allowed for an acknowledged alarm's fault condition to be corrected before the unit resets (reactivates) the alarm and begins the dialout process all over again. The default setting for this parameter is 0 minutes and 0 seconds, meaning that the alarm reset feature is disabled.

Programmable range: 0 min, 0 sec to 270 min, 0 sec

Default setting: 0 min, 0 sec (disabled)

MONITORS

The Manager 2000 software provides the user with the ability to monitor all of a Sensaphone 2000's inputs in real-time graphical form. You must be on-line with a unit to monitor its inputs. Once on-line, you can access real-time input monitoring from the Toolbar button labeled *Monitors*. 



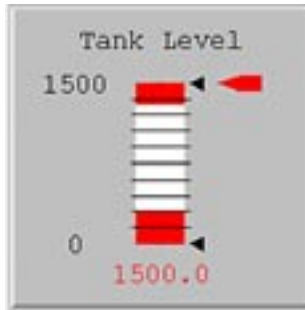
Displaying Input Monitors

To display a monitor, from the Monitor menu choose File>New, then select the desired input and monitor type. More than one monitor may be displayed for each input.

Delete Input Monitors

To delete a monitor, select it by clicking on it. Next, choose File>Delete from the Monitor menu.

There are 3 types of input monitors: Bar, Gauge, and Contact Status. Below is a view of each and an explanation of its features.



bar monitor

Bar Reading:

This is the real-time value of the input. This number is white if the input status is OK, but will change to red if the input goes above or below the programmed alarm limits.

Low Limit:

The lowest possible reading of the monitor. This is taken from the Table Low field on the Configuration tab of the Inputs form.

High Limit:

The highest possible reading of the monitor. This is taken from the Table High field on the Configuration tab of the Inputs form.

Low Alarm Limit:

(lower red zone) The low alarm limit for this input. This is taken from the Low Limit field on the Alarm Programming tab of the Inputs form.

High Alarm Limit:

(upper red zone) The high alarm limit for this input. This is taken from the High Limit field on the Alarm Programming tab of the Inputs form.

Minimum Input Reading:

(lower black triangle) This is the lowest value reached by this input. This is taken from the MIN field on the Status tab of the Inputs form.

Maximum Input Reading:

(upper black triangle) This is the highest value reached by this input. This is taken from the MAX field on the Status tab of the Inputs form.



gauge monitor

Gauge Reading:

This is the real-time value of the input. This number is white if the input status is OK, but will change to red if the input goes above or below the programmed alarm limits.

Low Limit:

The lowest possible reading of the monitor. This is taken from the Table Low field on the Configuration tab of the Inputs form.

High Limit:

The highest possible reading of the monitor. This is taken from the Table High field on the Configuration tab of the Inputs form.

Low Alarm Limit:

(lower red zone) The low alarm limit for this input. This is taken from the Low Limit field on the Alarm Programming tab of the Inputs form.

High Alarm Limit:

(upper red zone) The high alarm limit for this input. This is taken from the High Limit field on the Alarm Programming tab of the Inputs form.

Minimum Input Reading:

(lower black triangle) This is the lowest value reached by this input. This is taken from the MIN field on the Status tab of the Inputs form.

Maximum Input Reading:

(upper black triangle) This is the highest value reached by this input. This is taken from the MAX field on the Status tab of the Inputs form.




contact status monitor

The Contact Status monitor displays a different graphic depending on the Label/Units selected for a particular input. The displayed graphics are as follows:

<u>Input Label/Units</u>	<u>Input OK graphic</u>	<u>Input ALARM graphic</u>
none	[check mark]	[red X]
OK/Fault	[check mark]	[red X]
On/Off	[Light Bulb - ON]	[Light Bulb - OFF]
Running/Stopped	[Traffic Light - GREEN]	[Traffic Light - RED]
AC Power	[Light Bulb - ON]	[Light Bulb - OFF]

DESTINATIONS

Sensaphone 2000 will call up to 32 telephone numbers or E-mail addresses (both referred to as destinations) to report alarm conditions or send reports. Destinations can be voice calls, fax machines, computers with modems running Sensaphone 2000 software, E-mail addresses, numeric pagers, or alphanumeric pagers. You must be on-line with the unit to program the Destination parameters. Once you are on-line, choose Program from the main menu, then select Destinations. You can also access the Destination program from the Toolbar button labeled *Destinations*. 

Name	Destination	Call Zones				Call Mode	Dial Type	Intercall Delay	Send Report
		1	2	3	4				
1 John Smith	(212)655-5566	<input checked="" type="checkbox"/>	<input checked="" type="checkbox"/>	<input type="checkbox"/>	<input type="checkbox"/>	Until Ack	Voice	30	<input type="checkbox"/>
2 Steve Jones	(301)655-8978	<input type="checkbox"/>	<input checked="" type="checkbox"/>	<input checked="" type="checkbox"/>	<input type="checkbox"/>	Inform	Pager	30	<input type="checkbox"/>
3 Barbara Kelly	345-1122-A-0604099	<input type="checkbox"/>	<input type="checkbox"/>	<input checked="" type="checkbox"/>	<input checked="" type="checkbox"/>	Until Ack	Alpha	30	<input type="checkbox"/>
4 Jim Halio	JHalio@AOL.com	<input checked="" type="checkbox"/>	<input checked="" type="checkbox"/>	<input checked="" type="checkbox"/>	<input type="checkbox"/>	Inform	E-Mail	30	<input checked="" type="checkbox"/>

Next Page Page 1 of 8 Edit Zones OK

Dialout Destinations form

The Dialout Destinations form allows you to program information for up to 32 destinations. The parameters and their options are listed below:

Name:

This field allows you to program a description (16 characters max) for each destination. The name will appear on faxes and E-mail transmissions whenever an alarm or report is sent to the destination. If you are entering a fax destination be sure to use the name of person who you intend to receive the fax.

Destination:

The actual telephone number or E-mail address Sensaphone 2000 dials to deliver its report or alarm message. The Destination field can be up to 64 characters long for E-mail addresses and 32 digits for all other Dial Types and may consist of numbers, letters, and special dialing codes.

Numeric Pagers

The Sensaphone 2000 can send alarm messages to numeric pagers. It will automatically send its telephone number and the alarm input number when dialing to a numeric pager. All you have to do is enter the telephone number of your pager.

Example: (301)565-2300

Note: If your pager service is answered by a voice-prompted message you will need to enter additional programming. See the Special Dialing codes section below.

Alphanumeric Pagers

The Sensaphone 2000 can dial alphanumeric pagers to send alarm messages. The Sensaphone 2000 will send the unit description, telephone number, input name and input value. To program an alphanumeric pager destination, enter the phone number followed by the letter A and then the pager ID.

Example: 1-610-555-4593 A 0504099

E-mail

The Sensaphone 2000 can send alarm messages and reports via E-mail. For this to work you must have an internet E-mail account and register the unit with Phonetics. The unit will automatically dial a toll-free number to the E-mail server at Phonetics and then forward the information to you. A monthly fee is required to receive E-mail from your Sensaphone. Simply fill out the E-mail registration card that came with your unit, or contact Phonetics for more details. In the "Destination" field, enter the E-mail address.

Example: Jhalio@AOL.com

Special Dialing Codes:

Sometimes, when dialing out on certain phone systems, Sensaphone 2000 may need special instructions to access an outside phone line, to contact numeric pagers, or to use alphanumeric pager services. The following dialing codes give Sensaphone 2000 instructions on how to send the phone digits when dialing the phone number. Each code is counted as one digit toward the total of 32 digits. The dialing codes are:

P = two-second pause. A two-second pause can be placed anywhere within the phone number by typing the letter P (upper or lower case). The pause takes up one digit and may be used more than once. This is typically required when a pager service is answered by a voice prompted message. You must add enough pauses to get past the voice message. In this case you must enter the number you wish to be displayed on your pager.

Example: 555-2233 PP 444-8877#

POUND (#) or ASTERISK (*): When dialing to a numeric pager, a pound sign (#) or an asterisk (*) may be used within the phone number. An asterisk (*) typically is displayed as a dash (-) on most pagers.

Example: 1 # 6105554591 PP 986033 #

W = wait for answer. This code instructs Sensaphone 2000 to wait until the call is answered before continuing. The “W” code takes up one digit and may be used only once. The “W” code is typically used in the middle of a dialout number when calling a numeric pager. The Sensaphone 2000 will wait for the pager company to answer the call before sending the number to be displayed on the pager. Note that the 2000 automatically waits for the call to be answered after the last digit in the telephone number is dialed.

Example: 1-610-555-4593 W 610-558-2000

(pager company phone #) W (number to display on numeric pager)

Note that digits following “W” to numeric pagers will automatically be dialed as touch-tones.

I = send alarm input #. This code instructs Sensaphone 2000 to send the input numbers that have an alarm to a numeric pager. The “I” code takes up one digit and may be used only once in the phone number. Note that this is only required if you must insert additional dialing codes (such as pauses) to make your pager work.

Example: 555-2233 PP 444-8877 I

Special Alphanumeric Pager Dialing Codes

A = alphanumeric pager ID (required)

C = alphanumeric character password (optional)

A = alphanumeric pager ID: The “A” dialing code is used ONLY for alphanumeric pager destinations. It is placed between the pager company’s telephone number and a particular pager’s ID number by typing the letter A (upper or lower case). It instructs Sensaphone 2000 to wait until a connection is made to the alphanumeric pager service’s computer system before transmitting the ID number for a particular pager.

Example: 1-610-555-4593 A 0504099

C = alphanumeric character password: The “C” dialing code is used ONLY for alphanumeric pager destinations and only if your particular pager system requires a character password. This password may be required for Sensaphone 2000 to access the pager service’s computer system. If required, it is placed between the pager company’s telephone number and the required character password in the dialout sequence by typing the letter C (upper or lower case). The character password must precede the pager ID number.

Example if character password required:

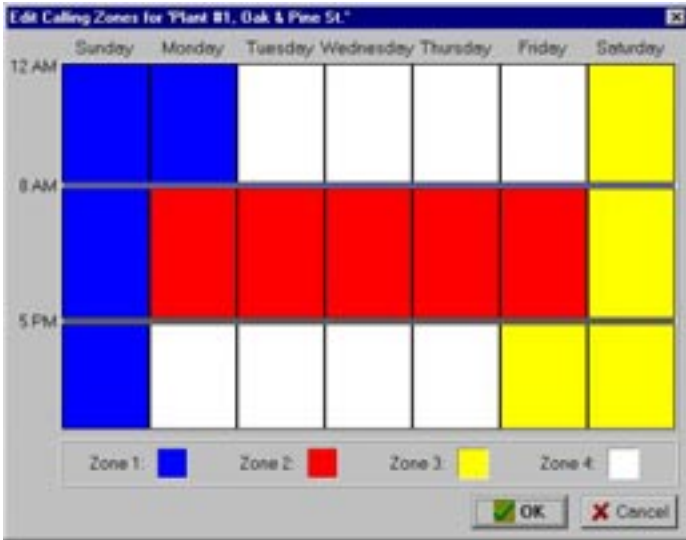
1-610-555-4593 C 000000 A 0504099

(pager company phone #) C (character password) A (pager ID #)

The alphanumeric character password is optional and is, in general, reserved for future services. Length of the password, when used, may be different in some systems. Consult your pager service for more information.

Call Zones:

Sensaphone 2000 is capable of assigning different destinations to specific calling groups (zones) to accommodate work shift schedules. There are 4 Call Zones to choose from. To include a destination in a Call Zone, check the appropriate box. To set up Call Zones, click on the “Edit Zones” button and the following form will appear:



edit zones form

The Edit Calling Zones form divides up the 7 day week into 21 blocks of time. To change the start and end time for each block, drag the horizontal divider bars up or down as needed. To reassign a block of time to a different Call Zone, click inside the block until it matches the color of the desired zone. To change the color of a zone, double click on the zone's color square at the bottom of the form. Select a new color from the palette, then click the OK button.

Alarm Call Mode:

The three selections for destination Alarm Call Mode are Disabled, Until Acknowledged, and Inform.

Disabled

Destinations programmed with Alarm Call Mode Disabled will never be called. This is simply a way to disable dialing to this destination if necessary.

Until Acknowledged

Destinations programmed with Alarm Call Mode "Until Acknowledged" will continue to be called until one of them acknowledges

the alarm. Once acknowledged, the remaining destinations will not be called.

Example: An alarm occurs and the Sensaphone 2000 is programmed to call destinations #1,#2, and #3 and all 3 destinations are Alarm Call Mode “Until Acknowledged.” The unit will call destination #1, if the alarm isn’t acknowledged, it will call #2. If destination #2 doesn’t acknowledge, then the unit will call destination #3. If the alarm still hasn’t been acknowledged, Sensaphone 2000 will call destination #1 again. This process will continue until one of the destinations acknowledges the alarm.

Note: Fax, E-mail and Modem destinations cannot be programmed as “Until Acknowledged” call modes.

Inform:

Destinations programmed with Alarm Call Mode “Inform” will be called until the alarm message has been successfully delivered one time, regardless of acknowledgment. If a transmission to an “Inform” destination was successful, that destination will not be contacted again. Sensaphone 2000 will only make additional attempts to contact an Alarm Call Mode “Inform” destination if that destination hasn’t successfully received its transmission (for example, due to a “no answer,” “busy signal,” “no carrier” response). If a transmission fails to reach a destination after the last calling round is completed, the failure is recorded in the Event Log. Calls to priority “Inform” destinations are useful for providing records of alarm events.

Example: The Sensaphone 2000 used in the above example is monitoring the heating system in a school. The first three destinations are set as Alarm Call Mode “Until Acknowledged” and programmed to call maintenance personnel. In addition, destination #4 is programmed to call the school’s fax machine and is set as Alarm Call Mode “Inform.” Sensaphone 2000 will call the maintenance personnel as described above so that they can fix the boiler, and will also send a fax to the school office informing them of the problem.

Important: Destinations programmed as Alarm Call Mode “Inform” cannot acknowledge alarms.

Dial Type:

This is used to specify the type of call Sensaphone 2000 will make to a particular destination. The available dialout types are: Fax, Voice, E-mail, Pager, Alpha Pager, and Modem.

Fax - This instructs Sensaphone 2000 to send a fax transmission to either a fax machine or a PC with the ability to receive a fax directly.

E-mail - This instructs Sensaphone 2000 to deliver a message to the E-mail address programmed in the destination field.

NOTE: For "E-Mail" Dial Types, *only* E-mail addresses may be programmed in the destination field, NOT telephone numbers. Sensaphone 2000 is pre-programmed with a toll-free 800 number that will automatically connect to Phonetics' E-mail server system. Note: E-mail service requires a subscription fee.

Numeric Pager - This instructs Sensaphone 2000 to dial a numeric pager and leave the unit's ID number and alarm input numbers on the display. This will happen automatically just by entering the pager's telephone number in the destination field. If you want to change the information that is sent to your pager or you are having trouble receiving the page, you may use the special dialing codes to customize the dialout to your pager.

NOTE: When dialing to a numeric pager it is sometimes necessary to combine codes. Certain pager systems vary and you must adjust accordingly. To test your pager system, use an extension telephone on the same line as the SENSAPHONE 2000 unit and listen in during the Sensaphone 2000's dial-out to confirm that your pager service is reached without a problem. If you must add a pause, use the letter P to insert a two second pause wherever necessary.

Alpha Pager - This instructs Sensaphone 2000 to deliver a text message to an alphanumeric pager.

Modem - This instructs Sensaphone 2000 to call a modem attached to a computer running Manager 2000 software.

Intercall Delay

The intercall delay is the amount of time Sensaphone 2000 will wait after completing a call before calling the next destination. The delay is in seconds, with a default of 30.

Note: A 30-second delay is too short to allow a call back if a pager is being called. Increase the delay time enough to accommodate your pager.

Send Report

Sensaphone 2000 can be programmed to automatically send reports to selected destinations. Check this box to include this destination when sending reports.

Note: Reports may only be sent to Fax or E-mail destinations.

DATALOGGING

Sensaphone 2000's built-in Data Logger can log and store information on all 8 universal inputs, AC power and backup battery voltage. You must be on-line with the unit to program the Datalogging parameters. Once you are on-line, choose "Functions" from the main menu, then select Data Logging. You can also access the Data Log programming from the Toolbar button labeled *Data Log*.



Note that whenever you change any parameters on the Data Log form the datalogger in the Sensaphone 2000 will be reset. If you need to make changes to your programming, be sure to "Retrieve Data" first.



data log form

Below is a list of Data Log programming parameters, their default settings and the range of programming for each parameter.

Interval:

Time between data logs.

Programmable range:

Minimum: 0 hours, 0 minutes, 1 second

Maximum: 199 hours, 59 minutes, 59 seconds

Default Setting:

0 hours, 0 minutes, 10 seconds

Warning

Setting the Data Logger interval to just a few seconds will produce large amounts of data. If you download this data regularly you will quickly begin to fill your hard disk. Care must be taken to evaluate your system and needs to avoid this situation.

Use Start Time

Checking this box will make the Sensaphone 2000 start its Data Logger at the time indicated in the Start Time box. If this box is not checked, Datalogging will begin immediately.

Start Time:

Sensaphone 2000 can be programmed to begin Datalogging at a particular time of day. When Sensaphone 2000's internal clock reaches the programmed Start Time, the unit will begin Datalogging the selected input values at the programmed interval. The Start Time function is used to delay the start of Datalogging. Once Datalogging has begun, the Start Time programming is ignored.

Default Setting: 12:00:00AM

Inputs being Logged

This selects which inputs Sensaphone 2000 will log. The unit's data logger can store 32,768 samples. Every time the unit logs input data, it uses one sample for each checked box. For example, if inputs 1-5 are selected, 5 samples are used up every time Sensaphone 2000 logs data. The more inputs you select, the fewer samples are left available. Below is a table showing the number of Data Samples available vs. the number of Inputs Being Logged. Once the Sensaphone 2000 has filled its Data Logger, it will begin overwriting the oldest Data Log samples with new ones.

# of Inputs Being Logged	Data Samples Available
1	32,768
2	16,384
3	10,922
4	8,192
5	6,553
6	5,461
7	4,681
8	4,096
9	3,640
10	3,276

Start/Stop Datalogging

To start Datalogging, click on this button.

Default setting: Stopped

NOTE: Any changes to the Data Log Programming form will **RESET** the datalogger.

RESET NOW button

This button will reset the Data Logger (i.e., delete the records) in the 2000. If the Data Logger was just received, a RESET within 5 minutes of downloading will only delete the records just downloaded. The 2000 will retain any data that was logged during the download period. After 5 minutes have passed since the download, clicking the RESET button will delete ALL records in the 2000.

Downloading the Data Logger

To view a Sensaphone 2000's Data Log samples, the unit's Data Logger must first be downloaded to your PC. You must be on-line with a unit to download its Data Logger. Once you are on-line, choose "Functions" from the main menu, then select Datalogging. You can also access the Data Logger from the *Data Log* Toolbar button.

To download the Data Logger, click "Retrieve Data."

Every time a unit's Data Logger is downloaded, the Manager 2000 software adds the new information to that unit's database in your PC. It also checks for and filters out duplicate Data Log records.

Viewing the Data Logger (on-line)

Once the Data Logger has been downloaded, it can be viewed. To view the Data Logger, click the "View Database" button on the Data Log Programming form. The following form will appear.

Log Time	Room Temp	Pressure	Tank Level
06:25:04PM 04/08/1997	77.9	702.5	1149.5
06:25:05PM 04/08/1997	77.9	702.5	1149.5
06:25:06PM 04/08/1997	77.9	702.5	1149.5
06:25:07PM 04/08/1997	77.9	702.5	1149.5
06:25:08PM 04/08/1997	77.9	702.5	1149.5

Viewing the Data Logger (off-line):

To view a unit's downloaded Data Logger off-line, follow the instructions for "Offline Communication" and "To View A Data File Offline" earlier in this chapter.

Below is a list of programming parameters for viewing the Data Logger:

Input selection:

You must choose which inputs to display. To display a Data Log record for an input, click on the input's button to highlight it.

From Date and To Date

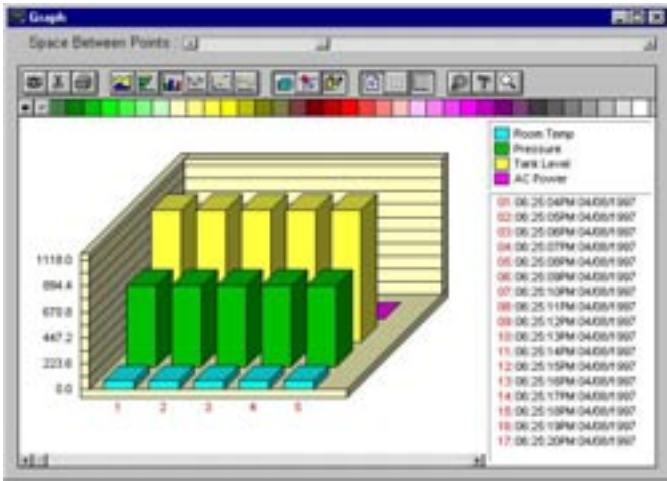
Selects a range of Data Log records by time.

Query:

Searches the Data Log database and displays the information that corresponds to the selected time period and selected inputs.

Graph:

Once the Data Log records have been displayed, they may be viewed in graph form by clicking the "Graph" button. The graph will show all inputs selected in the query. If too many samples are selected for graphing, the software gives you the option to average values. Otherwise, you will have to perform a smaller query to avoid averaging. The graph has many features that allow you to display the data graphically, including line graphs, bar charts and three-dimensional views. Experimentation is the best way to learn about all of the available options. A sample graph follows.



sample graph

Reset:

Deletes Data Log records for the current Sensaphone 2000 unit from your PC. It will reset all the information in the database for the selected unit.

Print:

Once the Data Log records have been displayed, they may be printed by clicking this button.

Export:

Once the Data Log records have been displayed, the displayed information may be saved as a comma-delimited file. This file can then be used in a spreadsheet such programs as Lotus 123 or Microsoft Excel.

EVENT LOGGER

Sensaphone 2000 keeps track of important system events with its built-in Event Logger. Each Sensaphone 2000 unit stores the last 500 system events. System events include alarms, incoming and

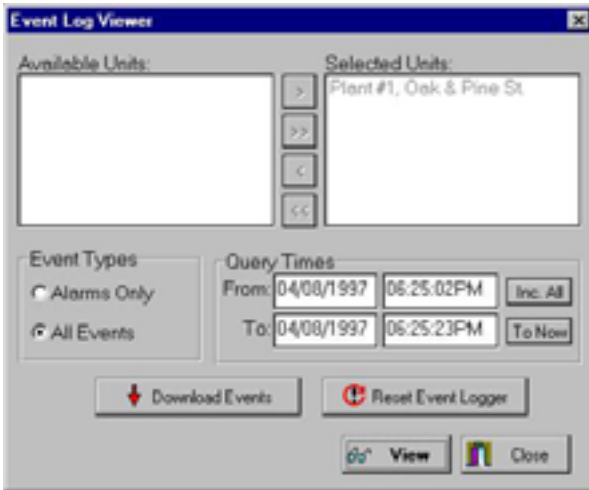
outgoing phone calls, and alarm acknowledgments. See Appendix A for a complete list of events stored by the Event Logger. Once the Event Log is full, the oldest record is overwritten by the newest.

Downloading the Event Logger

To view Sensaphone 2000's Event Log, the unit's Event Logger must first be downloaded to your PC. You must be on-line with the unit to download the Event Log. Once you are on-line, choose "Functions" from the main menu, then select "View Events." You can also access the Event Logger from the Toolbar button labeled *Events*.



The following event log form will appear:



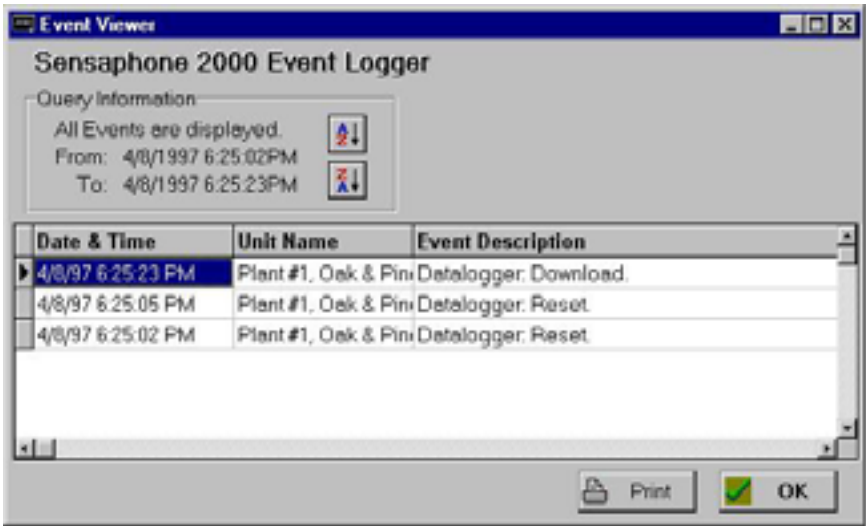
To download the Event Logger, click "Download Events."

Every time a unit's Event Logger is downloaded, the Manager 2000 software adds the new information to that unit's database in your PC. It also checks for and filters out duplicate Event Log records. The downloaded Event Logger can then be viewed off-line.

Viewing the Event Logger

Once the Event Logger has been downloaded, it can be viewed on the form called "Event Viewer."

Below is a list of programming parameters for viewing the Event Logger:



event viewer form

Unit selection:

Since the MANAGER 2000 software can contain Event Log information for multiple Sensaphone 2000 units, you must choose which unit's Event Log you wish to display. Look at the Event Log Viewer form. In the window labeled "Available Units" is a list of all Sensaphone 2000 units currently recognized by your PC. Highlight a unit by clicking on the unit name, and use the four add/remove buttons (>, >>, <, <<) to select the desired unit(s) as follows:

'add' ([>]) - Adds the unit to the "Selected Units" list.

'add all' ([>>]) - Adds all units to the "Selected Units" list.

'remove' ([<]) - Removes the unit from the "Selected Units" list.

'remove all' ([<<]) - Removes all units from the "Selected Units" list.

Event types:

Select here the types of events to display: All Events or Alarms Only.

Query Times:

Selects a range of event times to display. “Inc.All” will include all event times in the Sensaphone 2000, with a “To” date stretching into the future. “To Now” resets the “To” time to the exact moment you click on the button.

View:

Displays the selected Event Log records.

Reset Event Logger

Deletes all Event Log records from your PC’s database.

REPORTS

Sensaphone 2000 can send periodic reports to selected Fax or E-mail destinations. Reports may include either the current status of all inputs, stored Data Logger information, or both. You must be on-line with the unit to program Report parameters. Once you are on-line, choose “Programming” from the main menu, then select “Reports.” You can also access the Reports programming from the Toolbar button labeled *Reports*.



Reporting for Plant #1, Oak & Pine ...

Report Contents

Current Status

Data Logger 1 Records

Report will be 2 pages.

Report Time

Use Start Time: 07:30AM

Report Interval: Hours: 24 Minutes: 0

OK

reports form

Below is a list of Report programming parameters, their default settings and the range of programming for each parameter.

Current Status:

To send the current status of all inputs with the report, check this box.

Data Logger

To send information stored in Sensaphone 2000's Data Logger, check this box. If this box is checked, you must select the number of Data Log records to send with the report. Sensaphone 2000 will send the number of records requested beginning with the most recent record and follow in order of newest to oldest. (Note: A data Log record is a time slice of whatever inputs were being logged.) When Sensaphone 2000 sends Data Logger information with a report, it DOES NOT erase the information from the unit.

Use Start Time

Sensaphone 2000 can be programmed to begin sending reports at a particular time of day. When Sensaphone 2000's internal clock reaches the programmed Start Time, the unit will begin sending reports to the selected destinations. The Start Time function is used to delay the start of reporting. Once reporting has begun, the Start Time programming is ignored.

Note: To disable the Start Time function, leave the Start Time at the default setting of 12:00:00AM. Sensaphone 2000 will begin sending reports after the first Report Interval has expired.

Default Setting: 12:00:00AM

Report Interval

Time between reports.

Programmable range: Minimum - 0 hours, 1 minutes

Maximum - 24 hours, 0 minutes

Default Setting: 24 hours, 0 minutes

POLLING

Polling occurs when a PC automatically calls a remote Sensaphone 2000 with a modem at a predetermined time and retrieves information. The concept is similar to setting an alarm clock to download a unit's Data Logger or Event Log.

Polling is a useful feature for users who need to save more data than the Sensaphone 2000 is capable of holding. The unit's Data Logger can hold 32,768 input readings. This means that if one input is being logged, Sensaphone 2000 can store up to 32,768 data samples, but if 10 inputs are being logged, the unit can only store up to 3,276 data samples. Once the Sensaphone 2000 has filled its Data Logger, it will begin overwriting the oldest Data Log samples with new samples. If it is important that you save *all* of your data samples, and you intend to log more data than the Sensaphone 2000 can hold, **YOU MUST DOWNLOAD YOUR DATA.**

To manually download Sensaphone 2000 Data Log information to your PC, simply press "Retrieve Data" on the "Datalogging" programming form while on-line with the unit. The contents of the Data Logger will be transferred to a database in your PC.

The process is the same for downloading the Event Log. While on-line with the unit, press "Download Events" on the "Event Log Viewer" form and the unit's Event Log is saved to your PC. Polling is nothing more than choosing a time for these features to automatically execute. Two frequency options are available for automatic Polling: Weekly Schedule or Monthly. From the Configuration menu, select "Options." Polling Options are the last two at the bottom of the Options form.



polling options

If you select Once per Month, your unit will poll selected data automatically at 12:00 A.M. on the first day of the month every month.

Note: Choosing Once per Month will wipe out any Weekly Schedule you have set up.

For Monthly, choose Once per Month and click OK. Then to open the Monthly Polling Setup form, click on the Toolbar button labeled *Unit Schedule*.



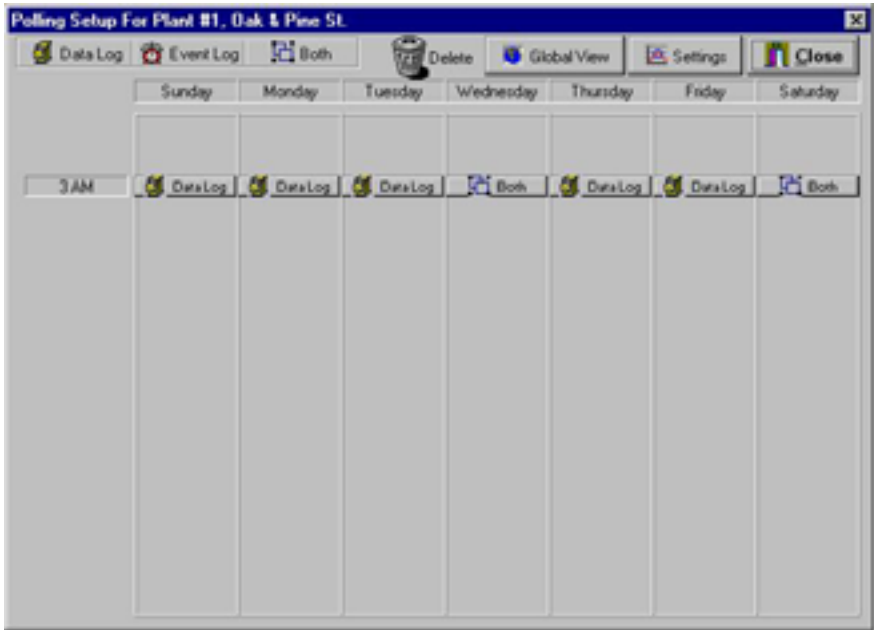
monthly polling setup form

First, select the units in the lefthand column that you want to poll, and click the top arrow to move each to the “Selected Units” column. Clicking the >> button will move all available units into Selected Units. Only the Units listed as Selected Units will be polled. The reverse arrows remove selected units, returning them to the “Available” column. Next choose your settings: Which items—Data Log, Event Log—are to be retrieved, whether you want the reports on each printed, and whether you want the unit’s database reset after the download. Then Click OK.

To initiate the polling sequence on demand, click the *Poll Now* button.

If you choose Weekly Schedule Polling, then you set up polling features as follows. Open the unit On-line or Off-line. Program by choosing “Polling,” then “Unit Schedule” from the main menu, or click on the Toolbar button labeled *Unit Schedule*.





weekly polling setup form

The screen displayed is the Polling Setup screen for the currently selected unit. This screen allows you to choose what type of poll you would like to schedule and when the poll will take place.

Each time your PC polls a Sensaphone 2000, you may download the contents of the selected unit's Data Logger, Event Logger, or both.

In the top left corner of the "Polling Setup" form there are 3 buttons labeled Data Log, Event Log, and Both.

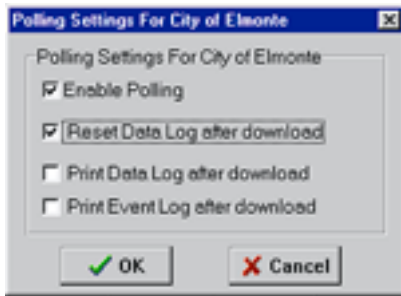
To schedule a poll, click on one of the buttons, drag it to the desired day of the week column, and drop it at the desired hour. The Polling Setup form is a WYSIWYG (What You See Is What You Get) calendar interface. Once you have released the button, you have scheduled a poll. If you wish to change the time of a poll, drag it to its new time and drop it. If you want to remove a poll, drag the poll over the trash can icon and drop it. The poll will disappear and is no longer scheduled.

Global View:

This button brings up a form that looks very similar to the Polling Setup form, except it contains all of the scheduled polls for every unit. If you wish to see the scheduled polls for a given unit you can select that unit in the combo box on the Polling Summary form.

Settings:

Click this button to set the following Polling options:



weekly polling settings form

Enable Polling:

If this box is checked, the current unit will be among the units polled at each scheduled interval. In order for your PC to make the scheduled Polling phone calls to units, you must enable Polling for each unit **and** turn on the master polling control. The master polling control is enabled by selecting Enable from the Polling menu or by clicking *Polling Mode* from the Toolbar.



Note: If you are logged into a unit with the PC, polling for that hour will not occur until you exit the unit. Also, it is important to note that if for some reason you are logged into a unit for an entire hour, your PC will not make the phone calls for that hour. If you are going to utilize the polling feature heavily, try to schedule polling at times when it is unlikely that your PC is being used.

Reset Data Log after download

If this box is checked, the Sensaphone 2000's Data Logger will be reset (cleared) once the poll is complete.

Note: The Sensaphone 2000 unit will not automatically delete its Data Log records when they are downloaded, unless you select this button. Resetting the Data Logger after polling is useful if you also intend to print the Data Log records after polling. If you do not clear the Data Log after a poll, the next time you poll the unit you will download and print the same records again.

Print Data Log after download

If this box is checked, the PC will print the downloaded Data Logger information after each poll.

Print Event Log after download

If this box is checked, the PC will print the downloaded Event Logger information after each poll.

Note: The data downloaded from the Sensaphone 2000 may be quite large, and printing all of it may take some time. Remember to keep an adequate supply of paper in your printer and also make sure that your printer has enough memory to handle large jobs. Automatic printing at the time of the poll allows you to schedule the print job at a time when it's less likely to interfere with other activities.

Chapter 5: Status Report and Voice Messages

The Sensaphone 2000 provides a voice status report via telephone using its own internal voice in combination with your recorded input messages. This allows you to set up a custom system that fully describes the unit's location, the input having a problem, its current value and units of measure. The messages may be recorded either at the unit by plugging a telephone into the Voice Record jack, or remotely by calling the unit. This section will describe how to program identification and input messages along with some examples. In addition, obtaining a status report both locally and remotely will be discussed.

Playing/Recording Messages using Voice Record Jack

To play and record messages using the Voice Record jack you will need a simple single-line Touch-Tone telephone. Plug this telephone directly into the 2000's Voice Record jack. (DO NOT connect the Voice Record jack to a telephone line or to a digital telephone system. This will permanently damage the unit). When you plug the telephone into the jack and lift the handset, the unit will recite a status report. At the end of the status report, the unit will say "Enter Password." This is the voice password. Enter the voice password using the telephone keypad buttons. If the voice password is entered correctly, Sensaphone 2000 will say "OK." If not, the unit will beep then say "ERROR," and you will have to hang up the phone and try again.

Once the voice password is accepted, Touch-Tone commands are used to record and play back messages as well as listen to a status report. The commands are listed below:

Play Command	Record Command	Erase Command	Message Description
* 1	# 1	##1	Input Message #1
* 2	# 2	##2	Input Message #2
* 3	# 3	##3	Input Message #3
* 4	# 4	##4	Input Message #4
* 5	# 5	##5	Input Message #5
* 6	# 6	##6	Input Message #6
* 7	# 7	##7	Input Message #7
* 8	# 8	##8	Input Message #8
* 9	# 9	##9	Identification (ID) Message
* *			Status Report

To record a message, press the [#] key followed by the message number you want. For example, to record the ID message, press [#] then 9. After you hear the start beep, begin speaking into the phone. You have until the second beep to complete your message. You have 6 seconds of recording time for the ID message and 4 seconds for each of the 8 input messages.

To play back a message, press the [*] key followed by the message number you want. For example, to play the ID message, press [*] then 9.

To request a complete status report, press the [*] key twice.

Note: Since the unit can only communicate with one device at a time, it will not answer any calls nor make any calls while you are on-line in local voice mode.

Local Status Report

To receive a voice status report at the unit, plug a telephone into the Voice Record jack. After a few seconds the unit will begin reciting a status report. At the end of the report it will ask for a password. The password is the Voice Password required to change voice messages and acknowledge alarms. If entered correctly, the unit will allow you to use the Touch-Tone commands to record/listen to messages and acknowledge alarms. When finished simply hang up.

Status Report

To receive a voice status report remotely, call the unit and after you hear the unit beep, press any Touch Tone within 3 seconds. The unit will then recite a status report. If the unit starts its modem tone sequence, simply wait until it finishes. A status report will begin as soon the tones finish. At the end of the report it will ask for a password. The password is the Voice Password required to change voice messages and acknowledge alarms. If entered correctly, the unit will allow you to use the Touch-Tone commands to record/listen to messages and acknowledge alarms. When finished simply hang up. The unit will disconnect itself automatically if no Touch-Tone commands are received within 10 seconds.

Sample Status Report

Hello, this is (Unit Phone Number)

Input one (recorded message #1), (input value), (units), (alarm status)

Input two (recorded message #2), (input value), (units), (alarm status)

Input three (recorded message #3), (input value), (units), (alarm status)

Input four (recorded message #4), (input value), (units), (alarm status)

Input five (recorded message #5), (input value), (units), (alarm status)

Input six (recorded message #6), (input value), (units), (alarm status)

Input seven (recorded message #7), (input value), (units), (alarm status)

Input eight (recorded message #8), (input value), (units), (alarm status)

The electricity is On/Off

Battery condition 8.7 volts, OK/Low/Very Low

Chapter 6: Operation

After installation and programming have been completed, Sensaphone 2000 is fully operational. This chapter explains how Sensaphone 2000 operates.

PART ONE: ALARM DIALOUT AND ACKNOWLEDGMENT

There are 3 stages to a complete alarm event: 1) Alarm Recognition, 2) Alarm Notification, 3) Acknowledgment. Note that not all alert conditions will go through each stage. For example, some may not meet the recognition time.

Alarm Recognition:

- 1) Sensaphone 2000 monitors 8 inputs plus power failure. When the status of an input changes or exceeds user-programmed limits, it causes an alert condition.
- 2) If the alert condition lasts long enough to meet its programmed recognition time, the alert condition becomes an alarm and Sensaphone 2000 begins the alarm notification sequence.

Alarm Notification:

Sensaphone 2000 can make 6 types of phone calls: Voice, Fax, E-mail, Modem, Beeper, and Alphanumeric pager.

Dialout Note:Call Progress

Sensaphone 2000 monitors call progress when dialing out. If Sensaphone 2000 dials out and encounters a busy signal or no answer within 30 seconds, the unit hangs up, waits the programmed intercall delay time, and then dials the next phone number.

Alarm Call Mode: Until Acknowledged vs. Inform

Until Acknowledged:

Destinations programmed with Alarm Call Mode “Until Acknowledged” will continue to be contacted until one of them acknowledges the alarm.

Note: Fax and E-mail destinations cannot be programmed as “Until Acknowledged.”

Inform:

Destinations programmed with Alarm Call Mode “Inform” will be contacted until the alarm message has been successfully delivered one time. If a transmission to Alarm Call Mode “Inform” destination was successful, that destination will not be contacted again.

Important: Destinations programmed as Alarm Call Mode “Inform” CANNOT ACKNOWLEDGE ALARMS.

Alarm Dialout -Voice

When dialing out to a destination programmed as “voice,” Sensaphone 2000 waits for the phone to be answered, then recites its user-recorded identification message, then the message identifying the input that has gone into alarm.

Below is an example of what Sensaphone 2000 might say during a typical ‘voice’ dialout:

“Hello, this is (user recorded ID message)”

“The electricity is off”

“Hello, this is (user recorded ID message)”

“The electricity is off”

“Hello, this is (user recorded ID message)”

“The electricity is off”

“Enter acknowledgment code.”

In this example, the number of Voice Message Repetitions was set to three.

Note: If the call reaches an answering machine, the message will be recorded, but Sensaphone 2000 will be talking over your outgoing message, so you will probably lose part of the first alarm message repetition.

Alarm Dialout - Beeper

When dialing out to a destination programmed as “Beeper,” Sensaphone 2000 leaves a number (usually the unit’s own phone number) on the display of a numeric beeper.

IMPORTANT: When dialing out to a phone number programmed as “Beeper,” Sensaphone 2000 DOES NOT speak a voice message. It calls the beeper company or service, enters the number to be displayed on the beeper, then hangs up.

Alarm Dialout -Alphanumeric Pager

When dialing out to a destination programmed as “Alpha,” Sensaphone 2000 leaves a text message up to 80 characters long on the display of an alphanumeric pager.

IMPORTANT: When dialing out to a phone number programmed as “Alpha,” Sensaphone 2000 DOES NOT speak a voice message. It calls the pager company or service, transmits the information to be displayed on the pager, then hangs up.

Alarm Dialout - Modem

When dialing out to a destination programmed as “Modem,” Sensaphone 2000 waits for the phone to be answered by a modem, establishes a data connection, then transmits its alarm message.

IMPORTANT: When dialing out to a phone number programmed as “Modem,” Sensaphone 2000 DOES

NOT speak a voice message. It is expecting the call to be answered by a PC running Phonetics Manager 2000 Windows software. Once a connection is established, the Sensaphone 2000 transmits the alarm information, then hangs up.

Alarm Dialout - Fax

When dialing out to a destination programmed as “Fax” Sensaphone 2000 waits for the phone to be answered by a fax machine, establishes a connection, then faxes its alarm message.

IMPORTANT: When dialing out to a phone number programmed as “Fax,” Sensaphone 2000 DOES NOT speak a voice message. It is expecting the call to be answered by a fax machine. Once a connection is established, the Sensaphone 2000 faxes the alarm information, then hangs up.

Alarm Dialout - E-mail

When dialing out to a destination programmed as “E-mail,” Sensaphone 2000 is pre-programmed to call the toll-free 800 number of the Phonetics’ E-mail server system. Once connected, the unit delivers its alarm message to the E-mail address programmed in the destination field.

IMPORTANT: When dialing out to a phone number programmed as E-mail, Sensaphone 2000 DOES NOT speak a voice message. It is expecting the call to be answered by the Phonetics’ E-mail server system. Once a connection is established, the Sensaphone 2000 E-mails the alarm message, then hangs up.

ALARM ACKNOWLEDGMENT :

Alarm Acknowledgment Voice Dialout

Repeated below is the same example of what Sensaphone 2000 might say during a typical “voice” dialout:

“Hello, this is (user recorded ID message)”

“The electricity is off”

“Hello, this is (user recorded ID message)”

“The electricity is off”

“Hello, this is (user recorded ID message)”

“The electricity is off”

“Enter acknowledgment code.”

Sensaphone 2000 will now wait 5 seconds for the Touch-Tone acknowledgment code (and acknowledgment ID if chosen) to be entered. After the last digit of the acknowledgment code has been received, Sensaphone 2000 will respond by saying: “Alarm Acknowledged.” The alarm has been acknowledged and the unit will hang up. Once the alarm has been acknowledged, the dialout process stops.

If the Touch-Tone acknowledgment code is not received, the Sensaphone 2000 will offer you a second chance to enter it, responding with: “beep,” “error,” “Enter acknowledgment code.” If the acknowledgement code is still not received, then the Sensaphone 2000 will respond by saying: “beep,” “error,” “goodbye.” The alarm has not been acknowledged. Sensaphone 2000 will hang up and wait for a callback acknowledgment. This waiting period is called the “intercall delay time.” During this time you may call the unit back from a Touch-Tone phone. Wait for the unit to beep. Then hit any key on the phone, and the unit will give a voice report. Once you receive the complete report, enter the code to acknowledge the alarm (and acknowledgment ID if chosen). NOTE: An alarm cannot be acknowledged using a pulse (rotary) telephone.

Alarm Acknowledgment - Beeper Dialout

Sensaphone 2000 will dial out to your beeper service and leave a number on the display of your beeper. (See Programming Section) The unit will then hang up without speaking a voice message and wait for callback acknowledgment. This waiting period is called the “intercall delay time.” During this time you may call the unit back from a Touch-Tone phone to receive a report of the alarm condition and acknowledge the alarm by entering the acknowledgment code (and acknowledgment ID if chosen).

NOTE: An alarm cannot be acknowledged using a pulse (rotary) telephone.

Below is an example of what Sensaphone 2000 will say when you call it back to acknowledge a typical alarm:

“Hello, this is (user recorded ID message)”

“The electricity is off”

“Hello, this is (user recorded ID message)”

“The electricity is off”

“Hello, this is (user recorded ID message)”

“The electricity is off”

“Enter acknowledgment code.”

Sensaphone 2000 will now wait 5 seconds for the Touch-Tone acknowledgment code to be entered. After the last digit of the acknowledgment code has been received, Sensaphone 2000 will respond by saying: “Alarm Acknowledged.” The alarm has been acknowledged and the unit will hang up. Once the alarm has been acknowledged, the dialout process stops.

If the Touch-Tone acknowledgment code is not received, Sensaphone 2000 will offer you a second chance to enter it, responding with: “beep,” “error,” “Enter acknowledgment code.” If the acknowledgement code is still not received, then the Sensaphone 2000 will respond by saying: “beep,” “error,” “goodbye.” The alarm has not been acknowledged. Sensaphone 2000 will hang up and wait for a callback acknowledgment. This waiting period is called the “intercall delay time.” During this time you may call the unit back from a Touch-Tone phone. Wait for the unit to beep. Then hit any key on the phone, and the unit will give a voice report. Once you receive the complete report, enter the code to acknowledge the alarm (and acknowledgment ID if chosen). NOTE: An alarm cannot be acknowledged using a pulse (rotary) telephone.

TIP: When Sensaphone 2000 is programmed to make calls to beepers, make sure the intercall delay time is long enough to give the person carrying the beeper some time to get to a phone to call the unit back.

Alarm Acknowledgement-Alphanumeric Pager

Sensaphone 2000 will dial out to your alphanumeric pager service and leave a message on the display of your pager. (See Programming Section, Chapter Four, for dialing to beepers/pagers). The unit will then hang up without speaking a voice message and wait for callback acknowledgment. This waiting period is called the “intercall delay time.” During this time you may call the unit back from a Touch-Tone phone to receive a report of the alarm condition and acknowledge the alarm by entering the acknowledgment code (and acknowledgment ID if chosen).

NOTE: An alarm cannot be acknowledged using a pulse (rotary) telephone.

Below is an example of what Sensaphone 2000 will say when you call it back to acknowledge a typical alarm:

“Hello, this is (ID message)”

Input 1, closed, alarm exists

“Hello, this is (ID message)”

Input 1, closed, alarm exists

“Hello, this is (ID message)”

Input 1, closed, alarm exists

“Enter acknowledgment code.”

Sensaphone 2000 will now wait 5 seconds for the Touch-Tone acknowledgment code to be entered. After the last digit of the acknowledgment code has been received, Sensaphone 2000 will respond by saying, “Alarm Acknowledged.” The alarm has been acknowledged and the unit will hang up. Once the alarm has been acknowledged, the dialout process stops.

If the Touch-Tone acknowledgment code is not received, Sensaphone 2000 will respond by saying: “beep,” “error,” “goodbye.” The alarm has not been acknowledged. Sensaphone 2000 will hang up and wait for a callback acknowledgment. This waiting period is called the “intercall delay time.” During this time you may call the unit back from a Touch-Tone phone. Wait for the unit to beep. Then hit any key on the phone, and the unit will give a voice report. Once you receive the complete report, enter the code to acknowledge the alarm (and acknowledgment ID if chosen). NOTE: An alarm cannot be acknowledged using a pulse (rotary) telephone.

TIP: When Sensaphone 2000 is programmed to make calls to alphanumeric pagers, make sure the intercall delay time is long enough to give the person carrying the pager some time to get to a phone to call the unit back.

Alarm Acknowledgment Automatic (Max Calls)

Sensaphone 2000 has the ability to acknowledge itself by using the Max Calls function. The unit keeps a count of the number of phone calls it makes for a particular alarm. Once the number of calls made reaches Max Calls, Sensaphone 2000 will acknowledge the alarm and stop the dialout process.

Acknowledgment ID

The ID feature is useful to identify who has acknowledged an alarm when that acknowledgment was performed on a return call to the unit. The feature allows the user to key in a two-digit Touch-Tone ID code right after entering the alarm acknowledgment code. The ID code is then stored in the Event Log so that users would be able to identify who acknowledged the alarm. For example: A 2000 unit calls John's pager and leaves an alarm message, then continues calling the programmed destination numbers. John finally gets to a telephone and is the first to call in to the unit. When he acknowledges the alarm, he enters 555-21. The number 21 is John's Acknowledgment ID. The Event Log would show that ID #21 had acknowledged the alarm. (See figure below)

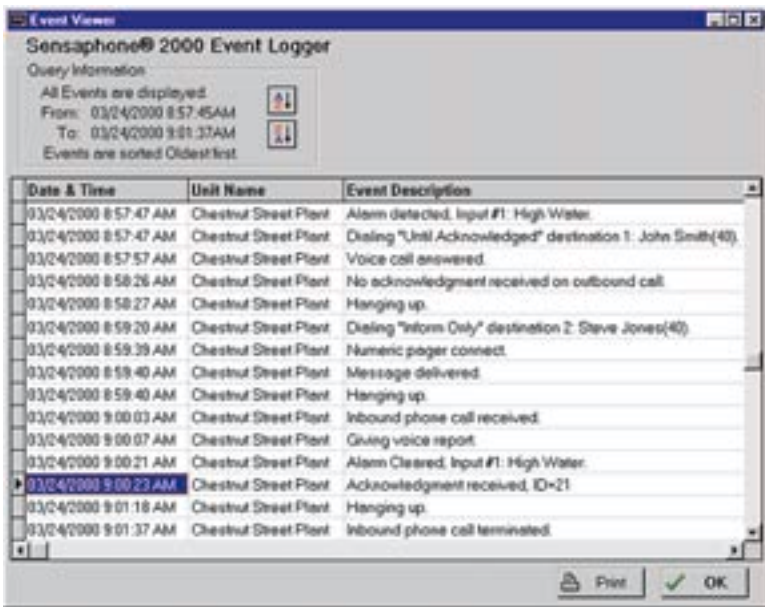


Figure 1: Event Log showing Acknowledgment ID

PART TWO: REPORT DIALOUT

The unit is capable of sending automatic reports on a programmable time basis, (i.e. Send a report every x hours starting at time $xx:xx$). Reports may be sent via fax or e-mail only, and will be sent to all destinations programmed to receive reports. Reports cover the unit data, which includes the current conditions of each input, power status, and battery condition. If the Data Logger is enabled and programmed to send with reports, a Data Log report will also be sent at this time.

PART THREE: CALL-IN STATUS

Using PC with Manager 2000 Windows Software: At any time the unit is idle (not dialing out or communicating locally), you can call into it using a modem. Sensaphone 2000 will answer after its programmed “Rings To Answer,” connect, and go on-line. At this point you have entered an on-line session identical to the local programming session, and may program the unit as necessary.

Voice Mode:

You can also call into the Sensaphone 2000 using a Touch-Tone telephone. After answering, Sensaphone 2000 will beep once. Immediately press any key on your Touch-Tone keypad to get a voice status report. If the Sensaphone 2000 doesn't receive a Touch-Tone signal within a few seconds, it will attempt to make a data (modem) connection. If a data connection isn't made after the programmed “Carrier Wait Time,” Sensaphone 2000 will again switch to voice mode and recite a status report. Immediately following the status report, Sensaphone 2000 prompts you for a voice-mode password. This password allows you to use Touch-Tone commands to both listen to and record the unit's voice messages.

To listen to a recorded alarm message:

1. Press the [*] key on your phone.
2. Press the corresponding input number key: 1-8, or press 9 to listen to the ID message.

Sensaphone 2000 will recite the corresponding message.

To record a message remotely:

1. Press the # key on your phone.
2. For an input alarm message, press the corresponding input number key: 1-8, or press 9 to record the ID message.

After the beep, say your message clearly. The input alarm messages may be up to 4 seconds long. The ID message can be up to 6 seconds long. Sensaphone 2000 will beep at the end of the allotted time.

Below is an example of a voice status report:

“Hello, this is 610-555-2000” (ID number)

“This is the Sensaphone 2000 in lift station 21.” (user-recorded ID message)

“Input 1, jockey pump #1 overload, closed, OK”

“Input 2, jockey pump #2 overload, closed, OK”

“Input 3, main pump overload, closed, OK”

“Input 4, wet well level, 8.9 feet, OK”

“Input 5, dry well sump pump, Off, OK”

“Input 6, exit flow, 746.9 gpm, OK”

“Input 7, wet well air temperature, 54.4 degrees fahrenheit, OK”

“Input 8, waste grinder motor overload, closed, OK”

“The electricity is On”

“Battery voltage 8.6 volts, OK.”

“Goodbye”

Chapter 7: Polling Mode & Auto Answer Mode

Polling mode and Auto Answer mode allow your PC to communicate automatically with multiple Sensaphone 2000s. Polling is the process of calling units to retrieve the Data Log or Event Log (see “Data Logging,” “Event Logger,” and “Polling” sections in Chapter Four). Auto Answer mode lets your PC receive alarm calls when the destination type is set to modem. In order to receive alarm calls or have the software perform polling you *must* have the program running and have one or both modes enabled. When the software receives an alarm message it will display it on your screen immediately as well as update the Event Log for that particular unit. When using these features, your computer and modem must remain ON continuously.

Enabling Auto Answer Mode

You can enable Auto Answer mode by selecting Functions>Auto Answer from the menu bar or by clicking on the *Answer Mode* icon in the Toolbar.



Note that Auto Answer mode can only be enabled if you are *not* connected with a unit. Once you're connected, it becomes grayed out.

Enabling Polling Mode

To enable Polling mode, click on the *Polling Mode* icon on the Toolbar or select Polling>Enable from the menu bar. This is the global polling-enable control. In addition, each unit must have Polling enabled (see Chapter Four for specific Polling Settings).

APPENDIX A

Checking Your Sensaphone 2000 for Proper Operation

We recommend that you test your Sensaphone weekly to be sure it is functioning properly. This will ensure that when a problem arises the Sensaphone will be ready to alert the appropriate personnel.

There are several tests that can be performed:

1. Call the unit and listen to the Status Report. This will test the unit's ability to answer the phone and speak a message. It will also verify that the inputs are reading properly, the alarm conditions are OK, the electricity is on, and that the batteries are OK.
2. Create a test alarm on an input and allow the unit to contact all programmed telephone numbers. This will make sure that the Sensaphone is programmed properly. It will also prepare personnel to respond appropriately when they receive a call from the Sensaphone.
3. Test the batteries (if installed) by unplugging the AC Adapter and making sure that the Sensaphone continues to function. Check the battery voltage by logging on to the unit and viewing the Inputs screen. The battery voltage should be about 8.5V. The screen should also indicate that the AC Power is OFF. Reconnect the AC Adapter when finished.
4. Test the internal modem by calling the Sensaphone from a computer and logging on.

APPENDIX B

System Events List

EVENT LOGGER - List of System Events

Startup completed
Unit reset by user
Data Logger reset
Data Logger started
Data Logger stopped
Data Logger downloaded
Data Logger full
Diagnostic - hardware reset
Diagnostic - reset program RAM
Diagnostic - reset all RAM
Password attempt successful for status only
Password attempt successful for programming access
Password attempt failed
Alarm detected
Alarm reset time expired - alarm detected
Alarm detected but not configured
Alarm acknowledged by max calls
Alarm acknowledged by 15 calls to phone 1
Alarm acknowledged by inbound phone call
Acknowledgment request received
No acknowledgment received on outbound call
Dialing “Until Acknowledged” phone number
Dialing “Inform” phone number
Phone busy

No answer

Voice call answered

Modem connect

Fax connect

E-mail connect

Numeric pager connect

Alpha pager connect

Message delivered

Hanging up

Inbound phone call received

Giving voice report (for inbound calls)

Inbound phone call terminated

APPENDIX C

Engineering Specifications

Electrical

Power Requirements:

120VAC 60Hz 10W (UL listed power supply)

Power Surge Protection:

17V Metal Oxide Varistor and solid state transient protection

Battery System:

(6) C-cell Rechargeable Nicad batteries (not included)

Battery Charging:

Precision voltage controlled charging system

Battery Backup time:

10 - 15 hrs

Inputs

Input Channels:

8 universal, AC Power and battery

Input Types:

Normally Open/Normally Closed contact, 2.8K thermistor [temperature range: -58°F to 176°F (-50°C to 80°C)], 10K thermistor [temperature range: -60°F to 300°F (-50°C to 150°C)], 4-20mA current loop, 0-5V analog voltage

Input Conditioning:

Open Contacts see 5VDC, closed contacts see 0.5mA, Thermistors, see 5VDC through 10K Ohms, 4-20mA inputs, see 220 Ohms to ground, 0-5V analog inputs see 5M Ohms

Input Fault Protection:

35V over/under voltage protection

Input Resolution:

10 bits

Datalogging

Number of Channels:

Inputs 1-8, AC Power & Nicad Battery backup (selectable)

Total Number of Samples: 32,768

Sampling Rate:

Programmable from 1 second to 200 hours

All samples include date and time.

Communication

Phone Line Connection:

RJ11 jack for connection to the public switched telephone network; pulse & tone dialing

Communication Types:

Voice, Fax, E-mail, modem, alphanumeric pager, numeric pager

Dialing Parameters:

Calls up to 32 destinations (telephone numbers or E-mail addresses)

32 digit telephone numbers & 64 character E-mail addresses

Time between calls programmable from 10 seconds to 60 minutes

Maximum number of calling rounds programmable from 1 to 100

Programmable call list per input

Alarm acknowledgment via touch tones or callback

Call progress monitoring to detect dial tone, busy signals & ringback

Modem:

Data throughput 14,400 bps, 14,400 bps Fax

Protocols: V.32bis, V.32, V.22bis, V.22A/B, V.23, V.21, Bell 212A & 103

Speech Technology:

(8) User-recorded voice alarm messages (4 seconds each) and (1) Identification message (5 seconds); 53 seconds of pre-recorded speech; 2.7KHz bandwidth, selectable speech for units of measure

Phone Line Surge Protection:

275V Metal Oxide Varistor

Programming

Programming Connection:

RS232 DB25 Female DCE; 38,400 baud

Programming Method:

local or remote PC with Sensaphone 2000 Software for Microsoft Windows (included)

Data Retention:

2 years typical (lithium battery backed static RAM)

Visual Indicators

Input Alarm Status:

1 red LED for each channel

AC Power Alarm:

1 red LED

System On:

1 green LED

Battery Condition:

1 green LED

Phone Line Off-hook:

1 amber LED

Environmental

Operating Temperature Range:

32°-122° F (0°-50° C)

Humidity:

0-90% RH, non-condensing

Physical

Enclosure:

Durable aluminum enclosure with integral mounting brackets for wall-mounting or panel mounting

Dimensions:

12.1"W x 7.2"H x 1.6"D

Weight:

3 lbs. (4 lbs. with batteries)

Approvals

FCC Part 68

FCC Part 15 Class A

Warranty

One year parts and labor warranty.

Specifications subject to change without notice.

E-mail delivery requires additional service fees.

Copyright 1996 Phonetics, Inc. Sensaphone is a registered trademark of Phonetics, Inc.

Phonetics, Inc.

APPENDIX D

Thermistor Tables

2.8K Thermistor Data

Degrees Celsius	Resistance (Ohms)
-50	187,625
-40	94,206
-30	49,549
-20	27,180
-10	15,491
0	9,142
10	5,572
20	3,498
30	2,256
40	1,491
50	1,009
60	697
70	490
80	351

10K Thermistor Data

Degrees Celsius	Resistance (Ohms)
-50	441.3K
-40	239.8K
-30	135.2K
-20	78.91K
-10	47.54
0	29.49K
10	18.79K
20	12.25K
30	8,194
40	5,592
50	3,893
60	2,760
70	1,990
80	1,458
90	1,084
100	816.8
110	623.5
120	481.8
130	376.4
140	297.2
150	237.0

APPENDIX E

RS232 Specifications

DB25 Socket Configuration:DCE Female

Start/Stop Protocol: None

Port Speed: 38,400 bps

Communications Protocol: 8 data bits, no parity, 1 stop bit

RS232 Pin Assignment:

<u>Pin</u>	<u>Signal</u>	<u>Symbol</u>	<u>Direction</u>
1	Frame Ground	FG	N/A
2	Transmitted Data	TD	to Sensaphone
3	Received Data	RD	from Sensaphone
7	Signal Ground	SG	N/A

APPENDIX F

Modbus Protocol

Function 02 - Read Input Status

Address Word

0000 - 0001

Returns ok/alarm for each input queried. This is the current input state, not the alarm status. It is one bit per input.

Function 04 - Read Input Registers

Address Word

0000 - 0028 Returns a 32 bit integer to represent the current input value.

8 inputs, AC detect, and Battery level.

Function 03 - Read Holding Registers

Function 06 - Preset Holding Register

Function 10 - Preset Multiple Registers

Address Byte

01 System Parameters

00	Unit's phone number	16		none
10	Dialing method	1	1:Tone 2:Pulse	Tone
12	Voice reps	1	0 to 10	3
14	Callback acknowledge	1	1:Yes 0:No	Yes
16	Max calling rounds	1	0 to 100	100
18	Rings till answer	1	1 to 20	1
1C	Carrier wait time	1	0 to 60 sec	35

1E	Alpha page speed	1	2:1200 1:300	1200
20	Dialout prefix	8	string[0-9 * # P W D]	none
28	Online timeout	2	0 to 255 min	4
2A	Auto daylight savings	1	1:Yes 0:No	Yes
2C	Acknowledgement code	6	string[0-9]	555

02 Datalogger Information

00	Datalog time interval	4	0 to 199:59:59	
04	Enable datalogger	1	0:No 1:Yes	
06	Reset datalogger	1	0:No 1:Yes (writing 1 clears)	
08	Unused	1		
0A	Use Start Time	1	0:No 1:Yes	0
0C	Unused	1		
0E	Hour start	1		
10	Minute start	1		
12	Second start	1		
14	Records Used	2	0 to xxxxx (read only)	
16	Records available	2	0 to xxxxx (read only)	
18	Which inputs to log	2	(1 bit for each 8 points)	

03 Cover Page Information

00	To: #3	32		
20	From: #1	32		
40	From: #2	32		
60	Send cover page	1	0:Yes 1:No	

04 Clock Variables - Writes to 40 thru 45 cause RTC update

00	Hour	1	0 to 23	
02	Minute	1	0 to 59	

04	Second	1	0 to 59
06	Day	1	1 to 31
08	Month	1	1 to 12
0A	Year	1	0 to 99

05 Reporting

00	Report time interval	4	0 to 199:59:59
04	Reports to send	1	0:None, 1:Status, 2:Datalog, 3:Both
06	Report start time	2	0 to 23h, 0 to 59m
08	Datalog Records	2	0 to 36810

06 Calling Periods

00	Day Start	1
02	Day End	1
04	Morning Periods	2
06	Afternoon Periods	2
08	Night Periods	2

07 Passwords

00	Programming Password	16	CR
10	Status Password	16	CR
20	Current Password	16	CR

08 thru 0F Unused

10 thru 2F Inputs (up to 128)

00	Name	16	Input #	
10	Type	1	0 to 8 (see list)	1
12	Low setpoint	4	-99,999.9 to 99,999.9	0
16	High setpoint	4	-99,999.9 to 99,999.9	100
1A	Alarm low limit	4	-99,999.9 to 99,999.9	0
1E	Alarm high limit	4	-99,999.9 to 99,999.9	
22	Recognition time	2	0 to 270:00	
24	Call list	4		
28	Units	1	0 to 19 (see list)	0
2A	Calibration	2	-999.9 to 999.9	0
2C	Alarm en/disable	1	0:Dis 1:En	
2E	Alarm reset time	2	seconds	
30	Custom Units	8		
38	Unused			
40	Another input record			
80	Another input record			
C0	Another input record			

50 thru 5F Destinations (up to 32)

00	Name	16		
10	Destination	64		
50	Dialout type	1	0 to 5 (see list)	2
52	Send datalog report	1	0:No 1:Yes	No
54	Call Mode	1	0, 1, 2 (see list)	0
56	Call Period 1	1	0:No 1:Yes	Yes
58	Call Period 2	1	0:No 1:Yes	Yes
5A	Call Period 3	1	0:No 1:Yes	Yes
5C	Call Period 4	1	0:No 1:Yes	Yes
5E	Delay time	2	30 to 3600 sec	60

- 60 Unused
- 80 Another destination record

60 Sensaphone 2000 Identification

- 00 Slave Address 1 1 to 247 255
- 12 Run Diagnostics 1 (writing a nonzero runs diags)
- 14 ROM Version Number 4 (Read Only)
- 18 Diagnostic Results 2 (Read Only)
- 1A ROM Checksum 2 (Read Only)
- 1C RAM Checksum 2 (Read Only)
- 1E Voice Password6 string[0-9] 555
- 24 End Online Session 1 write 42 to End session

61 thru FE Unused

FF Clear Alarms

To clear an alarm, write a non-zero value to its address. It is a write only address.

- 00 Clear alarm number 1
- 01 Clear alarm number 2
- 02 Clear alarm number 3
- 03 Clear alarm number 4
- 04 Clear alarm number 5
- 05 Clear alarm number 6
- 06 Clear alarm number 7
- 07 Clear alarm number 8
- 08 Clear alarm number 9
- 09 Clear alarm number 10
- 0A Clear Max Min for 1
- 0B Clear Max Min for 2

- 0C Clear Max Min for 3
- 0D Clear Max Min for 4
- 0E Clear Max Min for 5
- 0F Clear Max Min for 6
- 10 Clear Max Min for 7
- 11 Clear Max Min for 8
- 12 Clear Max Min for 9
- 13 Clear Max Min for 10

Function 11 - Report Slave Identification

Byte/Description

- 00 Echo of slave address
- 01 Function - 11
- 02 Byte count
- 03 Slave ID - 0x6F for Phonetics product
- 04 Run indicator status - 0x00=OFF, 0xFF=ON
- 05 Unit type ID - 0x01 for Sensaphone 2000
- 06 Access Level 0=None 1=Read Only (Status) 2=Read/Write (Programming)

Input Types:

The following is the list of available input types that can be selected at offset 10h of the input programming.

- * 0: Normally Open
- * 1: Normally Closed
- * 2: 2.8k Thermistor reading Fahrenheit
- * 3: 2.8k Thermistor reading Celsius
- * 4: 10k Thermistor reading Fahrenheit
- * 5: 10k Thermistor reading Celsius

- * 6: 4-20 mA
- * 7: 0-5 Volt
- * 8: Pulse Counter
- * 9: Run-time Accumulator

Input Units:

The following list comprises the available units that can be selected at offset

28h of the input programming. This affects both voice and data references.

- * 0: no units
- * 1: Okay/Fault
- * 2: On/Off
- * 3: Off/On
- * 4: Running/Stopped
- * 5: Stopped/Running
- * 6: deg F
- * 7: deg C
- * 8: inches
- * 9: feet
- * 10: gallons
- * 11: liters
- * 12: psi
- * 13: gpm
- * 14: volts
- * 15: amps
- * 16: hours
- * 17: minutes
- * 18: seconds
- * 19: custom (allows a user programmable unit entry, not represented in the voice or data list)

Dialout Types:

The following is the list of available dialout types that can be selected at offset 50h of the destination programming.

- * 0: Fax
- * 1: Voice
- * 2: E-mail
- * 3: Pager
- * 4: Alpha Pager
- * 5: Modem (running Sensaphone 2000 Manager software)

Dialout Modes:

The following is the list of available dialout call modes that can be selected at offset 54h of the destination programming.

- * 0: Disabled
- * 1: Until Acknowledgment
- * 2: Inform Only

APPENDIX G: Troubleshooting

In the event that a problem is encountered, this section will assist you in determining the cause, so that you can return the unit to its usual monitoring routine with minimal interruption.

Most problems with the Sensaphone 2000® are easy to identify and can be quickly corrected, and are found under the following general headings:

- Data Communications
- Dial-Out
- Temperature Monitoring
- General Problems

If you have tried the solutions outlined in this section and are not satisfied with the results, call Phonetics Customer Service at (610)558-2700, or follow the guidelines for shipping the Sensaphone 2000 to Phonetics for service (see Appendix H).

Problem	Cause	Solution
I. DATA COMMUNICATIONS 1. The Sensaphone 2000 won't communicate with my computer through the RS232 port.	<p>The wrong Comm Port may be selected in Manager 2000</p> <p>The cable is connected to your computer's parallel port.</p>	<p>Change the Comm Port in the Communications Setup screen.</p> <p>Connect the cable to one of your PC's serial ports.</p>

Problem	Cause	Solution
<p>2. The Sensaphone 2000 won't communicate with my computer using the modem.</p>	<p>The slave ID in the unit does not match the Slave ID in Manager 2000.</p> <p>The Sensaphone 2000 is on the phone communicating with someone else.</p> <p>The wrong Comm Port is selected for your modem.</p> <p>The Sensaphone 2000 is connected to an incompatible telephone line.</p> <p>The unit is on-line with a computer through the RS232 port and therefore</p>	<p>On the "Open Connection" screen, click on the EDIT button. On the left corner click on the box labeled "Reset" Click OK and then try to connect again.</p> <p>Wait until the phone LED goes off or turn the Power switch OFF and then ON.</p> <p>Change the Comm Port setting on the Communications Setup screen. On the "Open Connection" form, click on MODEM and then SETUP.</p> <p>The Sensaphone® must be connected to a standard (2-wire Analog) telephone line, and not to a digital extension to a phone system.</p> <p>Close the on-line session through the RS232 port.</p>

<p>won't answer a call.</p> <p>The Rings Until Answer is set too high. As a result, the Manager 2000 software is timing out before the 2000 answers the call.</p>	<p>Increase the Dial Time Out on the Communications Setup form or reduce the number of Rings Until Answer in the 2000.</p>
<p>The unit will not dial out if you are logged on through the RS232 port.</p>	<p>Close the on-line session through the RS232 port.</p>
<p>The telephone number may be incorrectly programmed.</p>	<p>Verify destination telephone numbers: Is a "1+area code" required? Does your telephone line require a "9" to reach an outside line?</p>
<p>A call zone may not be selected or the alarm may have occurred outside the selected call zone.</p>	<p>Check call zone programming for your destinations.</p>
<p>The Alarm Call Mode may be disabled for this destination.</p>	<p>Enable the Alarm Call Mode.</p>
<p>Recognition time is too long. An alarm condition does not remain in</p>	<p>Shorten the recognition time for the alarm or extend the amount of time the</p>

II. DIAL-OUT

1. The Sensaphone 2000 fails to dial out.

Problem	Cause	Solution
<p>2. The Sensaphone 2000 continues to dial out and I can't get on-line because it's always busy.</p>	<p>effect long enough to become a valid alarm.</p> <p>“Max Calling Rounds” is set to “zero.”</p> <p>The destination intercall times are programmed too short. The unit will wait the intercall time between calls and then dial the next number. If this value is too short, the opportunity to call in will be very short.</p>	<p>alarm exists. An unacknowledged alarm exists only when the red LED blinks on the front panel.</p> <p>Increase calling rounds to a number greater than zero.</p> <p>Extend the length of the intercall time for each destination.</p>
<p>III: TEMPERATURE MONITORING</p> <p>1. The temperature reading is -58° F or -50° C.</p>	<p>The temperature sensor has become disconnected or has broken wires.</p>	<p>Examine the wires to the temperature sensor and connect or replace the wiring.</p>

<p>2. The temperature is reading 176° F or 80° C.</p>	<p>The temperature sensor wires are touching or have shorted.</p> <p>The shunt for setting the input type is not installed in the TMP/DRY position.</p>	<p>Verify and correct wiring.</p> <p>Move the shunt to the correct position.</p>
<p>3. The temperature reading is incorrect when using a 10K thermistor.</p>	<p>The Sensaphone 2000 is compatible with a specific type of 10K thermistor. Since there are several types available, you must make sure that you are using the correct type. Otherwise incorrect readings will occur. The table in Appendix C shows the temperature vs. resistance curve for acceptable models.</p>	<p>Verify the temperature vs. resistance curve of your sensor and/or replace the sensor as necessary.</p>
<p>IV. GENERAL PROBLEMS</p>		
<p>1. The alarm status of an input is incorrect.</p>	<p>Incorrect input normality.</p>	<p>Change the input normality on the input configuration form.</p>

Problem	Cause	Solution
2. The Sensaphone 2000 starts dialing as soon as I turn it on.	<p>The shunt for setting the input type is in the wrong position.</p> <p>The unit has an unacknowledged alarm and is still trying to deliver its message. Even if the alarm condition no longer exists, the unit will continue to dial and deliver its message until it is finally acknowledged.</p>	<p>Confirm that the input shunt is in the correct position for your sensor.</p> <p>Acknowledge the alarm by: a) Going on-line with a PC and clearing the alarm; b) Calling the unit back with a telephone and giving the Touch Tone acknowledgement code; or c) Plugging a telephone into the Local Voice jack and giving the Touch Tone acknowledgement code.</p>

APPENDIX H

Accessories

The sensors listed below are available from Phonetics and represent the most commonly used input devices. Other dry contact sensors, designed for more specialized applications, may also be used. Commercial or industrial electrical supply houses can provide devices to monitor virtually any condition. For further information, contact Phonetics Customer Service at (610)558-2700.

MODEL NUMBER SENSOR / SWITCH

FGD-0006	Magnetic Reed Switch
FGD-0007	Passive Infra-Red Detector
FGD-0010	Accessory Hook-up Wire
FGD-0013	Water Detection Sensor
FGD-0022	Temp° Alert
FGD-0023	ISOTEL Surge Protector
FGD-0027	Humidistat
FGD-0049	Smoke Detector with Built-in Relay
FGD-0052	Humidity Transmitter
FGD-0053	24V Power Supply for Humidity Transmitter
FGD-0100	Remote Temperature Sensor
FGD-0101	2.8K Weatherproof Temperature Probe
FGD-0102	10K Weatherproof Temperature Probe
FGD-0103	10K Indoor Decorator Zone Temperature Sensor
FGD-0104	10K Outdoor Air Weatherproof Temperature Sensor
FGD-0105	10K Immersion Temperature Sensor
FGD-0200	Phonecell SX3e Cellular Phone
FGD-0201	3dB Spike Antenna for SX3e
FGD-0202	9dB Yagi Antenna for SX3e

FGD-0203 External Switching Power Supply for SX3e

FGD-0204 Battery Backup unit for SX3e

APPENDIX I

Returning the Unit for Repair

In the event that the Sensaphone 2000 does not function properly, we suggest that you do the following:

- 1) Record your observations regarding the 2000's malfunction.
- 2) Call the Technical Service Department

INDEX

4-20mA transducers. *See* Inputs: type

A

Access Passwords 35

Accessories for the 2000 111

Advanced Comm Setup 24

Alarm Acknowledgment

Acknowledgment ID 80

alphanumeric pager dialout 78–79

and intercall delay 79

beeper dialout & message 77–78

intercall delay setting 78

code programming 34

Max Calls function 79

voice dialout message 76–77

Alarm Call Mode 74

“inform” mode 74

“until acknowledged” mode 74

with fax and e-mail 74

Alarm Dialout 74

destination programming

alphanumeric pager 75

beeper 75

e-mail 76

fax 76

modem 75–76

voice 74

Alarm Notification 73

Alarm Programming Tab 40–42

alarm low/high limits 40–41

“Call list” button 41

dialout enable/disable 42

Inputs name field 40

recognition time 41

“Reset time” programming 42

Alarm Recognition 73

Alphanumeric Pagers. *See* Destinations: Dial Type

Auto Answer

enabling. *See* Polling: and Auto-Answer mode

C

Calling the 2000

on a Touch-Tone phone 81–82

Canadian Dept. of Communications

certification 6–7

Carrier Wait Time 35

Clearing Alarms. *See* Inputs Form: status tab: clear alarms button

Clock. *See* Unit Date & Time

Communications

Data

troubleshooting 105

local 29

local port configuration 22

modem 29–30

modem setup 22–23

offline 30

status screen 23

Configuration Options 25

Configuration Tab 38–40

input label/units 39

selecting custom values 39–40

input type 38

low/high table programming 38–39

offset value calibration 39

D

Data File

creating 30

deleting 31

loading existing programming 31

viewing 31

Datalogging 53. *See also* Polling

deleting the data log 58

downloading the data 56

programming Start Time 55

resetting 56

selecting inputs to log 55

viewing the data 56–58

graphs 57–58

Destinations 46–51

alarm call mode

disabled 50

inform 51

- until acknowledged 50–51
- calling zones 49–50
- dial type 52–53
- dialout destinations form 46–47
- intercall delay 53
- “send report” feature 53
- special dialing codes 48

Dialout Settings

- alpha pager speed 34
- dialing prefix 33
- dialout method 33
- maximum calling rounds 34
- troubleshooting 107
- voice repetitions 34

Dry Contact sensors. *See* Inputs: type

E

E-mail. *See* Destinations: Dial Type

Engineering Specifications 89

Event Logger 58–61. *See also* Polling

- list of system events 87–88

F

Fax. *See* Destinations: Dial Type

FCC Requirements 4–5

I

Incoming Alarm Notification 25–26

Incoming Calls 35

Inputs

- configuring 16–17
- detaching terminal block 113
- monitors 42–46
 - bar type 43–44
 - contact status type 45–46
 - deleting 43
 - displaying 42
 - gauge type 44–45
- programming 35–37
- type 16–17

Inputs Form

- status bar
 - minimum/maximum values 37

- status tab 36–38
 - clear alarms button 38
 - current input status 37
 - input alarm state 37
 - input name 36
 - input values 36–37
- intercall delay 73
 - and busy signal 73

L

- LED Indicators 18
- Line Seizure 16

M

- Manager 2000 Software
 - and “Event Log” data 60–61
 - calling in via modem 81
 - configuring 20–21
 - features 10
 - installation 19–20
 - menu choices 21
 - minimum system requirements 19
- modbus address. *See* Slave ID
- Modbus Protocol 97
- Modem. *See also* Destinations: dial type
 - setup 22–23

N

- Numeric Pagers. *See* Destinations: dial type

O

- On-Line Timeout 25

P

- Password access 27
- Phone Ext. Jack. *See* Line Seizure
- Phone Line Jack 15
- Polling 63–66
 - and Auto-Answer mode 83
 - Enable Polling 66
 - enabling 83
 - Print Data Log after download 67

Print Event Log after download 67

Printing options 67

“Setting Options” form 66–67

Programming Parameters

saving 30

R

Reports 61–62

automatic dialout of 81

Data log records in 62

programming start time 62

Rings Until Answer feature 35

RS232 Specifications 95

S

Safety Instructions 3–4

Sensaphone 2000

battery backup system 14

electrical surge protection 14

mounting 13

operating environment 13

strain relief ring 14

Slave ID 35

Special Dialing Codes. *See* Destinations: special dialing codes

System 31–67

programming parameters 31

T

Tables (Low & High). *See* Configuration Tab: low/high table programming

Technical Support 10

Temperature Monitoring

troubleshooting 108. *See also* Inputs

Thermistor Tables 93–94

Thermistors. *See* Inputs: type

Toolbar 21

U

Unit Data Form 27–28

Unit Date & Time 33

Unit Description 32–33

Unit Phone Number 32. *See also* System

V

Voice Password

recording 34

Voice Record Jack 15

and Touch-Tone commands 69

and voice password 69

connecting a phone to 69

for local status report 70

Voice Status Report

remote retrieval 70–71

1 YEAR LIMITED WARRANTY

1. **WARRANTOR:** Dealer, Distributor, Manufacturer

2. **ELEMENTS OF WARRANTY:** This Product is warranted to be free from defects in materials and craftsmanship with only the limitations and exclusions set out below.

3. **WARRANTY AND REMEDY: One-Year Warranty** — In the event that the Product does not conform to this warranty at any time during the time of one year from original purchase, warrantor will repair the defect and return it to you at no charge

This warranty shall terminate and be of no further effect at the time the Product is (1) damaged by extraneous cause such as fire, water, lightning, etc. or not maintained as reasonable and necessary; (2) modified; (3) improperly installed; (4) repaired by someone other than warrantor; (5) used in a manner or purpose for which the Product was not intended; or (6) sold by original purchaser.

WARRANTORS' OBLIGATION UNDER THIS WARRANTY IS LIMITED TO REPAIR OR REPLACEMENT OF THE PRODUCT. THIS WARRANTY DOES NOT COVER PAYMENT OR PROVIDE FOR THE REIMBURSEMENT OF PAYMENT OF INCIDENTAL OR CONSEQUENTIAL DAMAGES.

It must be clear that the warrantors are not insuring your premises or guaranteeing that there will not be damage to your person or property if you use this Product. The warrantors shall not be liable under any circumstances for damage to your person or property or some other person or that person's property by reason of the sale of this product or its failure to operate in the manner in which it is designed. The warrantors' liability, if any, shall be limited to the original cost of the Product. The warrantors assume no liability for installation of the Product and/or interruptions of the service due to strikes, riots, floods, fire, and/or any cause beyond Seller's control.

4. **PROCEDURE FOR OBTAINING PERFORMANCE OF WARRANTY:** In the event that the Product does not conform to this warranty, the Product should be shipped or delivered freight prepaid to a warrantor with evidence of original purchase.

5. **LEGAL REMEDIES:** This warranty gives you specific legal rights, and you may also have other rights which vary from state to state to the extent allowed by law expressly in lieu of any other express or implied warranty, condition, or guarantee.

Effective date 4/14/97

Phonetics, Inc.