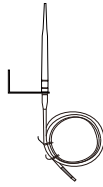




iVision+ Connect



External antenna **IVPC-ANT**

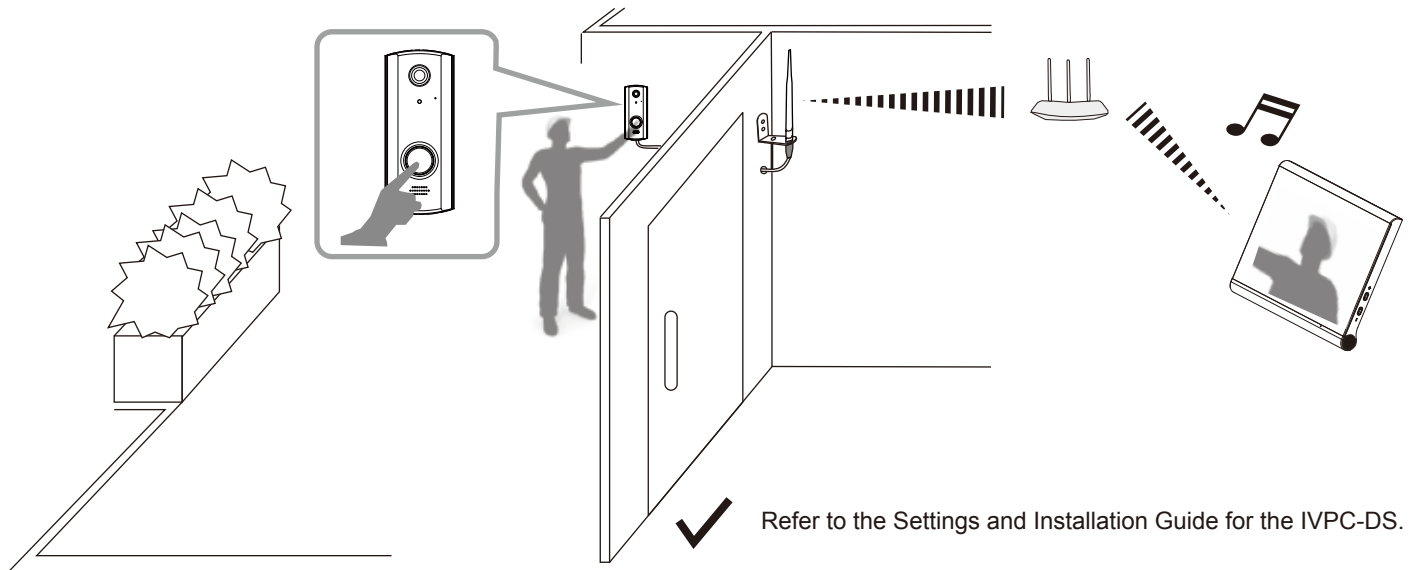
for Wi-Fi communication only.
(Sub 1 GHz IVPC-DI range will not be affected.)

Introduction

This guide covers the installation of the external antenna optional accessory for the IVPC-DS.
The external antenna comes with a 5 feet cable to allow for greater flexibility in antenna placement.
The guide will cover some key considerations for optimal placement of the antenna.

General Information

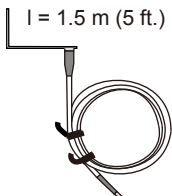
The IVPC-ANT helps by providing an antenna at a position that avoids obstacles against radio waves such as walls and doors. The best communication is achieved by a direct open path between the communicating devices, in this case the Wi-Fi router and the IVPC-DS. The antenna will not boost signal strength. If the Wi-Fi signal is too weak at the IVPC-DS location, please consider getting a Wi-Fi range extender.



Do not use any external antenna other than the IVPC-ANT.
Do not extend the antenna and connecting cables.
(The cable and antenna are matched for optimal performance.)

Parts identifications

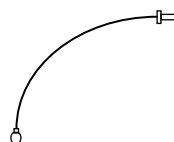
Bracket and cable
l = 1.5 m (5 ft.)



Antenna



Connecting cable
l = 0.2 m (7.9 inch)



< Accessories >

Screws & anchors



What to expect

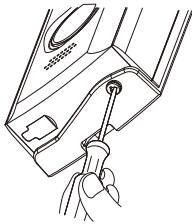
- 1 **Important points to consider**; read to avoid multiple installation attempts.
- 2 **Preparation on the IVPC-DS**; steps to take before mounting.
- 3 **Mounting**; how to mount the IVPC-ANT.
- 4 **Confirm operation**; make sure everything is working.

1 Important points to consider

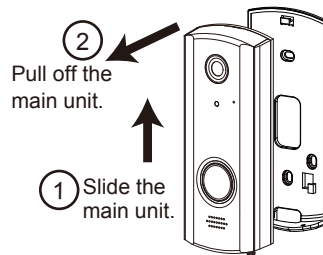
1. Activate the IVPC-DS and check the signal strength indicator using the IVPC-MS or a device running the OPTEx Vision App. This will be your reference level.
2. The IVPC-DS can be unmounted and brought to the intended antenna install location for Wi-Fi range checking before attaching the antenna. This is useful for assessing your Wi-Fi environment.

2 Preparation on the IVPC-DS

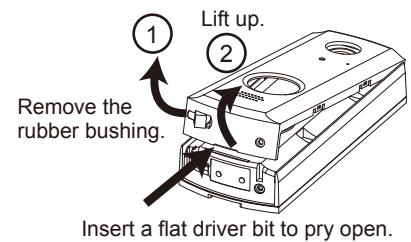
1 Loosen the lock screw.



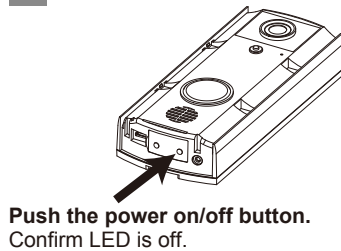
2 Remove the main unit.



3 Remove the front cover.



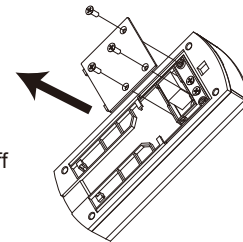
4 Power off.



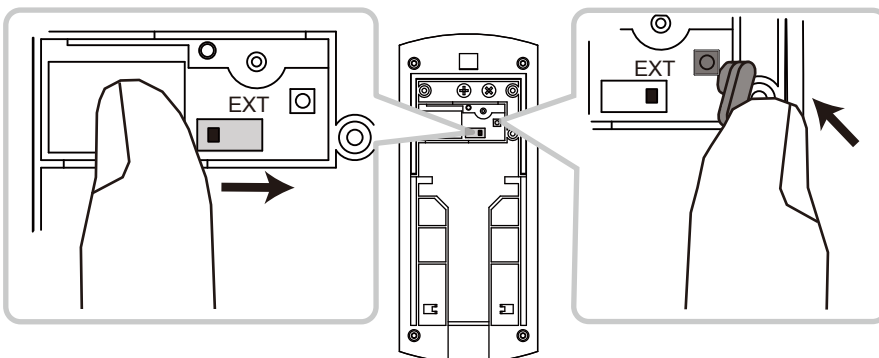
5 Remove the back cover.

Caution

- If hardwired, please turn off power to the device while the terminals are exposed.



6 Switch from INT to EXT of the internal/external antenna switch.

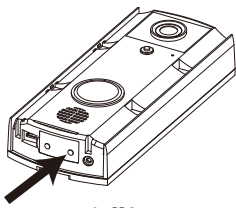


8 Replace the back cover.

Caution

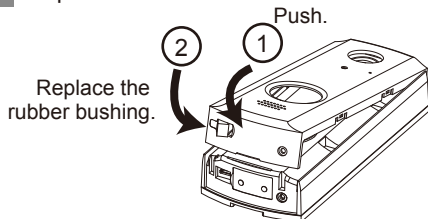
- The back cover protects against water intrusion. Make sure nothing is interfering with it.

9 Power on.



Push the power on/off button.

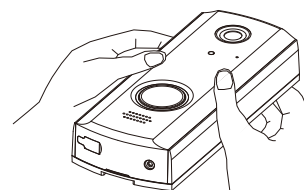
10 Replace the front cover.



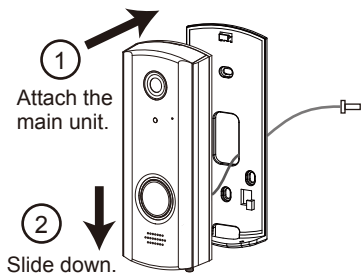
Replace the rubber bushing.

If having trouble with the cover, make sure the bushing is not in the way.

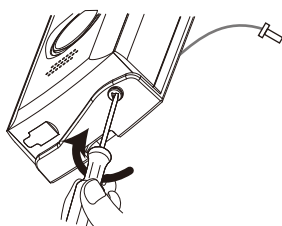
11 Push the front cover to secure.



12 Mount the main unit.



13 Tighten the lock screw.

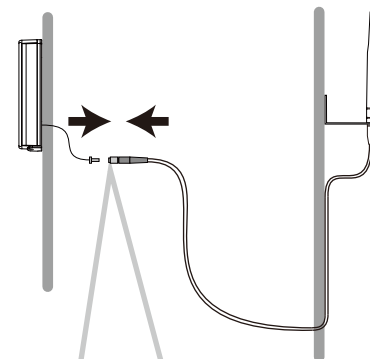
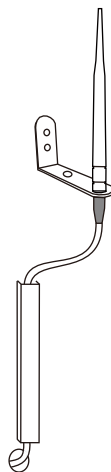
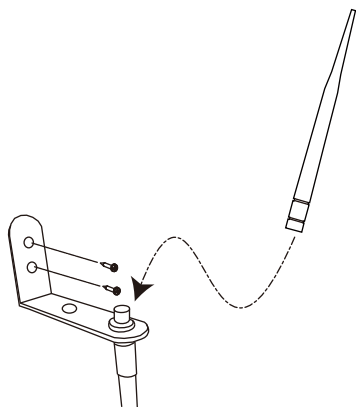


3 Mounting

1 Mount the bracket and set the antenna.

2 Run the cables.

3 Connect cables.



NOTE Consider waterproof treatment as necessary.

4 Confirm operation

- Do a test run to check whether the signal strength is enough.
- Push the doorbell button on the IVPC-DS and confirm audio and video on the IVPC-MS or the OPTEX Vision App.
- Hand this guide and the user manual to the end user for safekeeping.

<< Troubleshooting >>

Status	Check point	Solution
The signal has not improved.	Check that the internal/external antenna switch is properly set to EXT. Check that the antenna is properly connected to the back of the IVPC-DS port	Switch to EXT of the internal/external antenna switch of the IVPC-DS. Attach the connecting cable of the IVPC-ANT so it is firmly on the port.
The Wi-Fi signal is intermittent.	Check if other devices are showing Wi-Fi issues. Check if something has changed in the environment to interfere with the signal.	Check for Wi-Fi coverage using the IVPC-DS, IVPC-MS or device running the OPTEX Vision App. Move the Wi-Fi router closer to the IVPC-DS or use a range extender.

<p>NOTE</p> <ul style="list-style-type: none"> • Test the total operation after the installation completed. • Dispose of used products should be in accordance with local government regulations/laws.



OPTEX CO., LTD. (JAPAN)
URL: www.optex.net

OPTEX INC. (U.S.)
URL: www.optexamerica.com

p. 800-966-7839
warranty-returns@optexamerica.com
tech@optexamerica.com



ivisionplusconnect.info/techtips